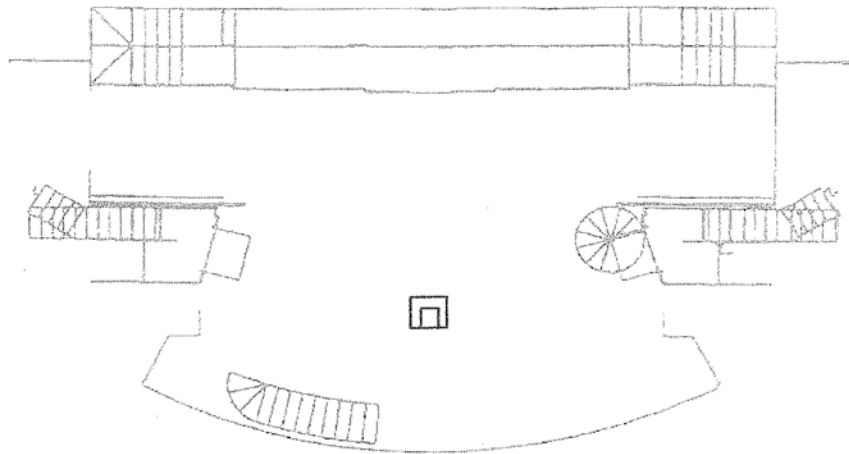


**SHIFT# 1**

**PAGE: 3**

**CUE LINE: Q-Light**

**FROM: Pre-Show (Bennet Armchair Onstage)**



**SHIFT:**

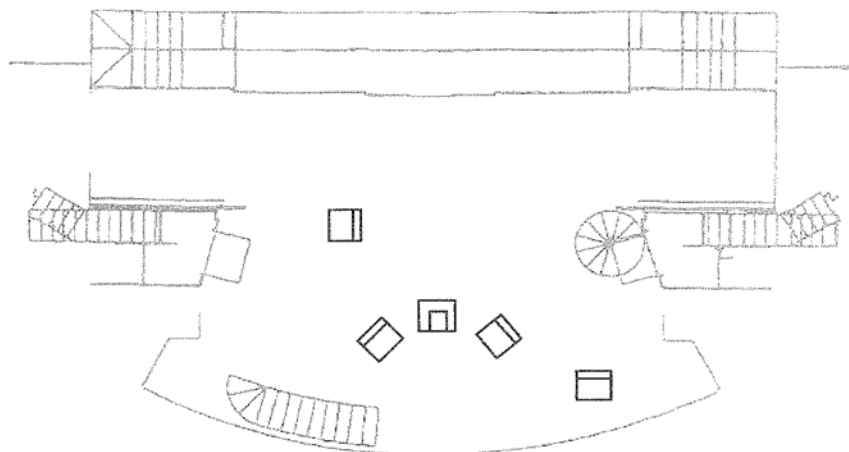
KRISTA - ent. DR with X-chair, set chair UR on black spikes facing SR, sit in chair

JULIA - ent. DR with X-chair, set chair CL on black spikes (left of armchair), sit in CR chair

ADELE - ent. DL with X-chair and embroidery, set chair CR on black spikes (right of armchair), sit in CL chair

SARAH - ent. DL with X-chair and book, set chair DL on black spikes facing DS, sit in chair

**TO: Bennet 1 (Center Stage, Facing Downstage)**

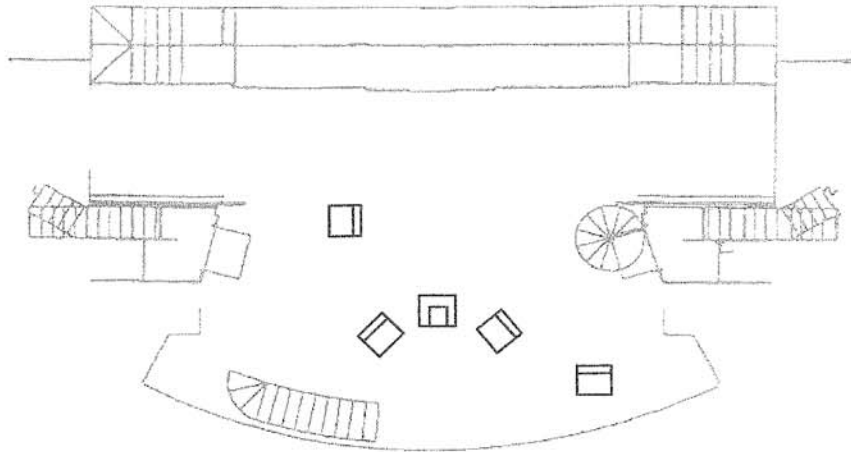


**SHIFT# 2**

**PAGE: 8**

**CUE LINE:** Mrs. Bennet: "But I knew I should persuade you at LAST."

**FROM:** Bennet 1 (Center Stage, Facing Downstage)



**SHIFT:**

KRISTA - start onstage, track CR X-chair to SR proscenium, facing DL, exit DR

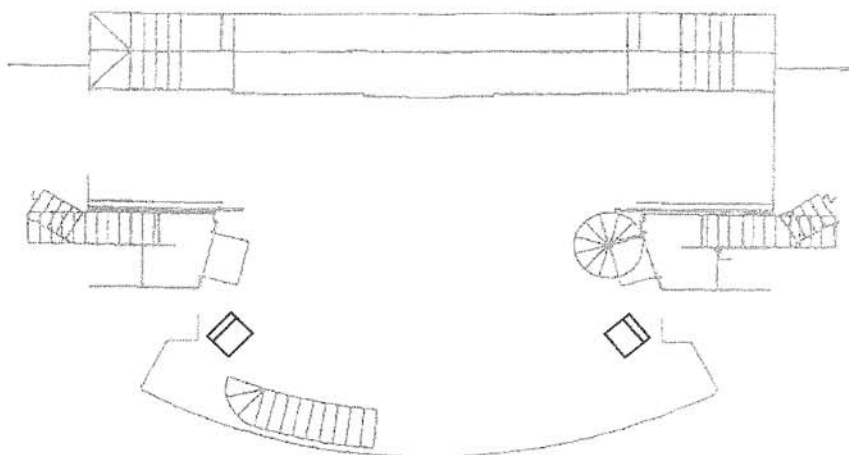
REMI - enter 1C, strike UR X-chair UL

DOUGLAS - enter UR, strike Bennet armchair (with embroidery hoop) UL

SARAH - start onstage, track DL X-chair to SL proscenium, facing SR, exit DL with embroidery hoop and book

JOE - enter DL, strike CL X-chair DL

**TO: Ball 1**

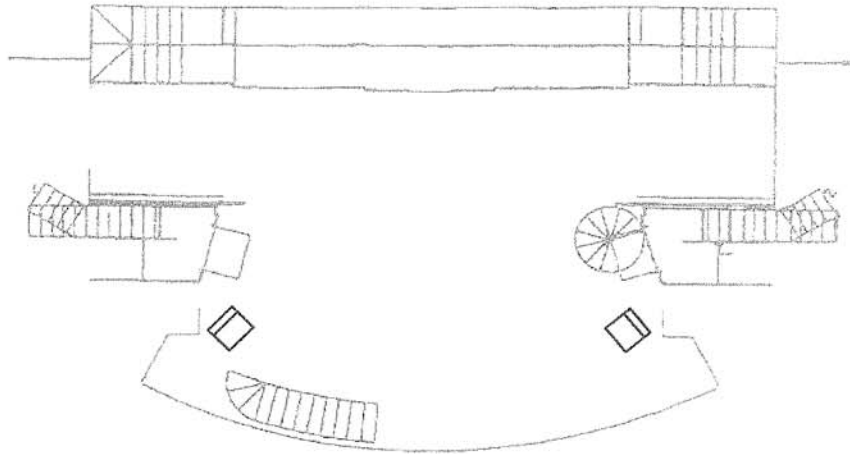


**SHIFT# 3**

**PAGE: 11**

**CUE LINE:** Bingley: "Miss Bennet, might you consider a stroll about the room?"

**FROM: Ball 1**

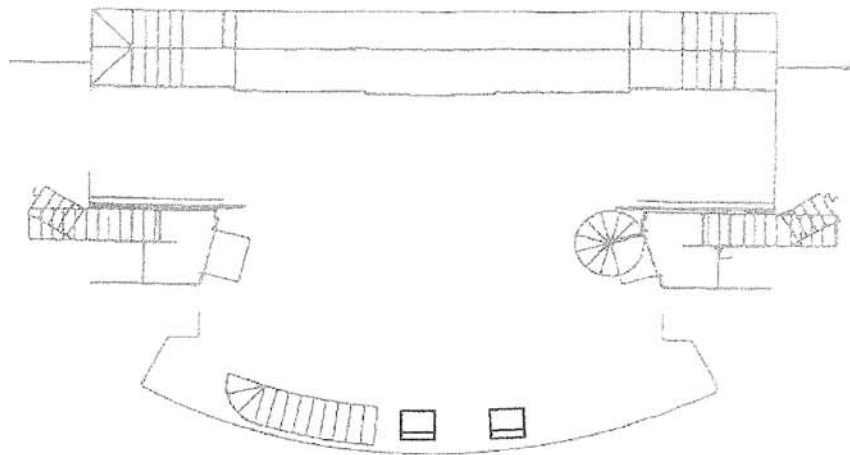


**SHIFT:**

ADELE - start onstage, track SL X-chair to DCL, facing US, sit

DOUGLAS - start onstage, track SR X-chair to DCR, facing upstage, sit

**TO: Ball 2**

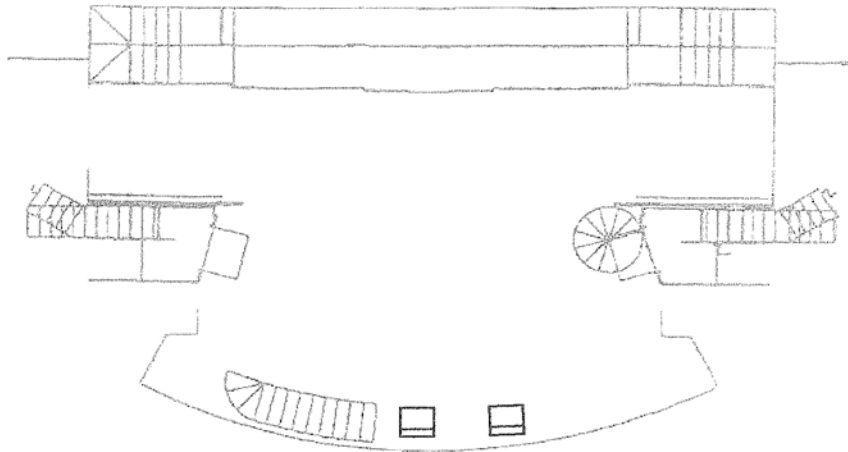


SHIFT# 4

PAGE: 16

CUE LINE: Charlotte: "You are being watched."

FROM: Ball 2



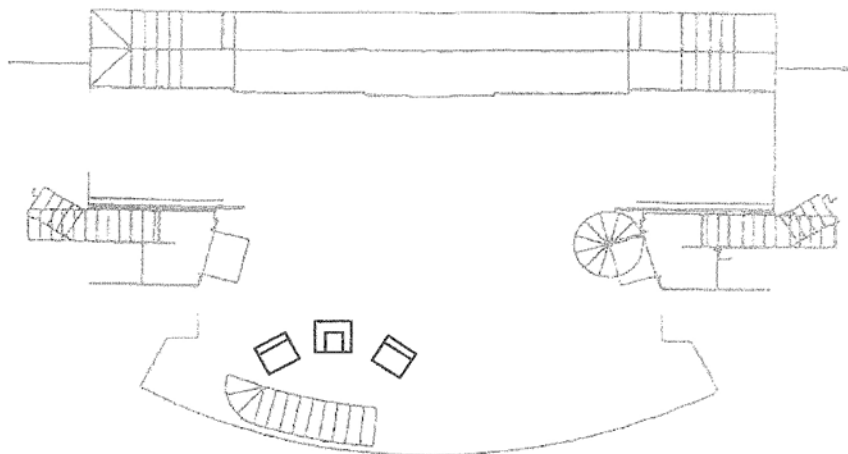
**SHIFT:**

DAVID - ent. DR with Bennet armchair and newspaper, set armchair on yellow spikes (facing DS), sit in armchair

DOUGLAS - ent. UL (in Reel Reprise line), track DR X-chair to R of armchair, exit DR

JOE - ent. UL (in Reel Reprise line), track DL X-chair to L of armchair, exit UL

**TO: Bennets (Dinner Invitation)**

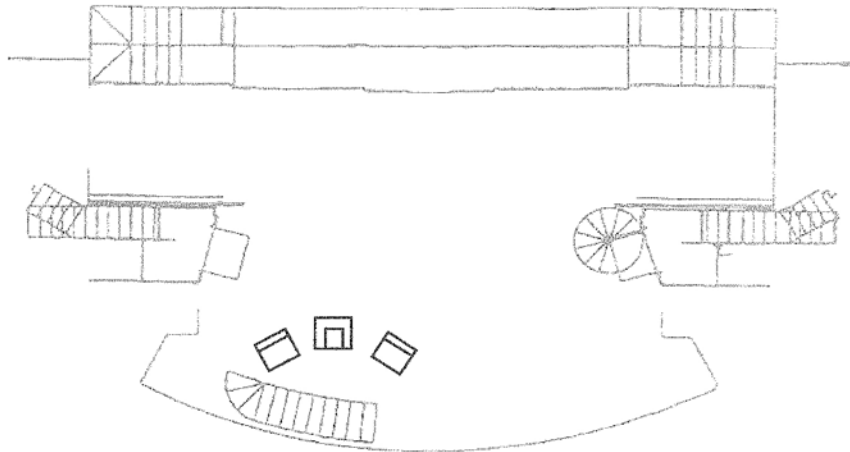


**SHIFT# 5**

**PAGE: 17**

**CUE LINE:** Mrs. Bennet: "...stay longer with the Bingleys in ill HEALTH."

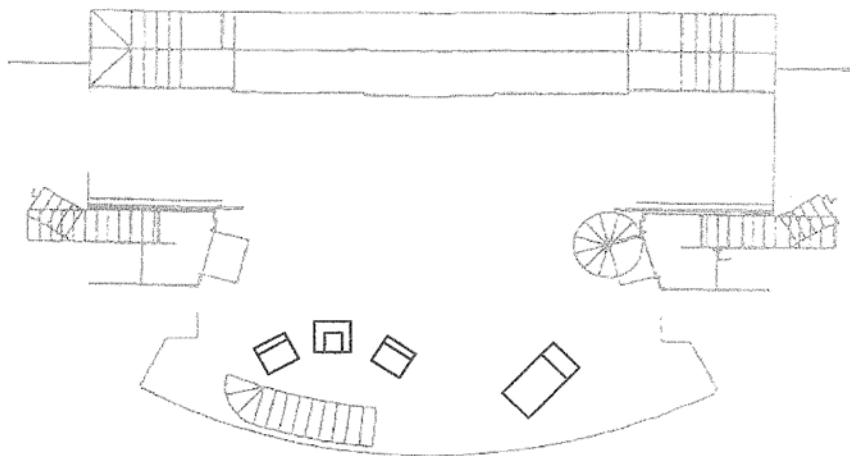
**FROM: Bennets (Dinner Invitation)**



**SHIFT:**

**JOE - ent. UL with chaise, set DL angled to DC, exit DL after KRISTA gets onto chaise**

**TO: Pre-Netherfield**

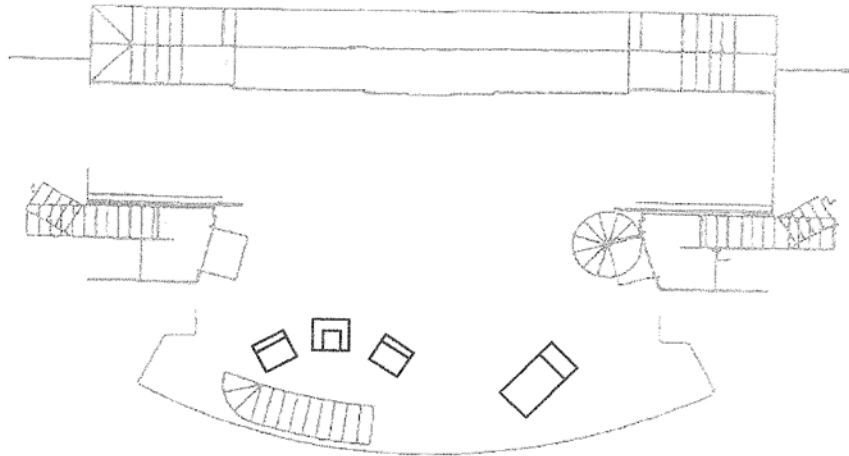


SHIFT# 6

PAGE: 18

CUE LINE: Mrs. Bennet: "Mr. Bennet!"

FROM: Pre-Netherfield



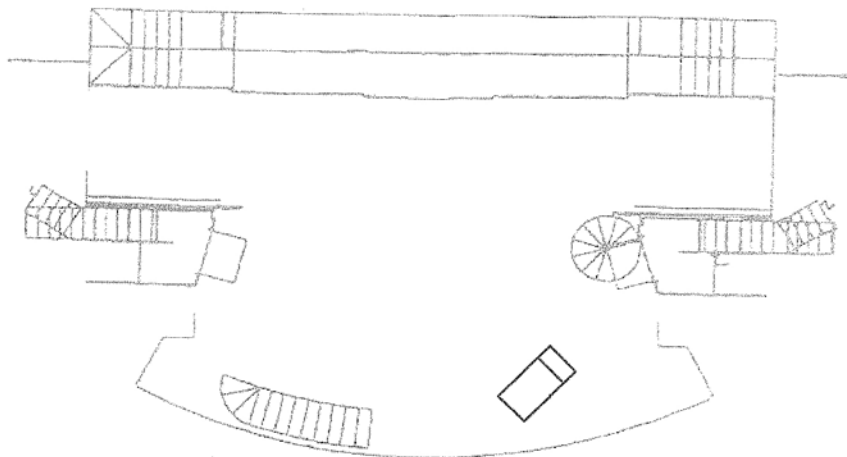
SHIFT:

DAVID - start onstage, strike L X-chair DR

JENNIFER - ent. DR, strike Bennet armchair DR

ADELE - ent. DR, strike R X-chair DR

TO: Netherfield Chaise Scene

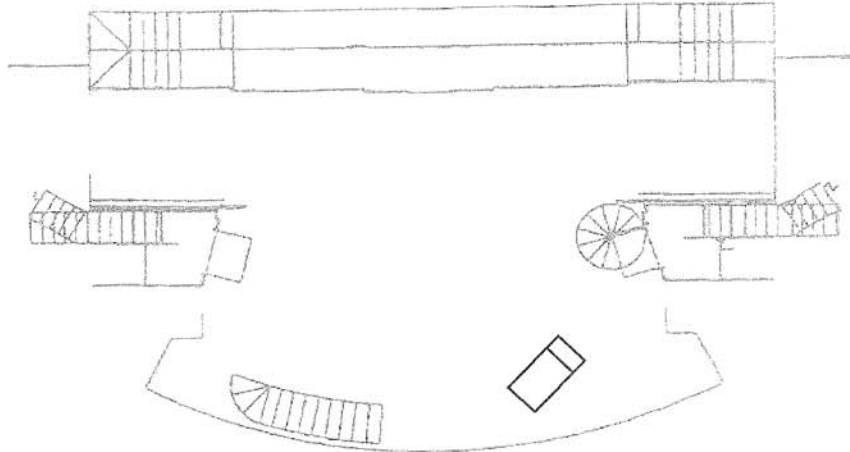


SHIFT# 7

PAGE: 19

CUE LINE: Elizabeth: "Well..." (Q-Lights)

FROM: Netherfield Chaise Scene



**SHIFT:**

DOUGLAS - ent. UR with card table (cards on top), set table CS, cross to R of AMY, hold R X-chair for AMY to sit, cross above table to behind chaise, strike chaise (with KRISTA on it) to UL

AMY - ent. DR with X-chair (after card table is set), set chair to R of card table, sit in chair

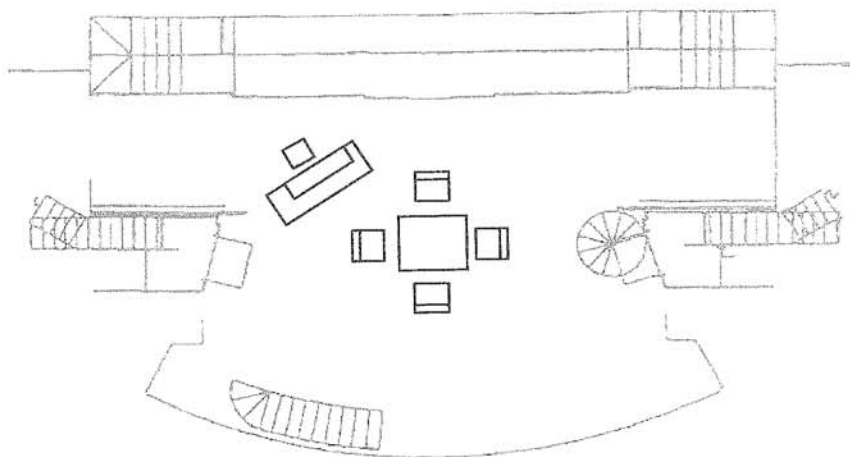
TONY - ent. 1C with X-chair (after card table is set), set chair US of card table, sit in chair

LIAM - exit UL, receive X-chair, enter UL, set chair to L of card table, sit in chair

ADELE - ent. DR with X-chair, set chair DS of card table, exit DR

DAVID - ent. UR with piano and stool (on top of piano), set piano (at angle) UR, set stool US of piano, exit UR

**TO: Netherfield Card Table with Piano**

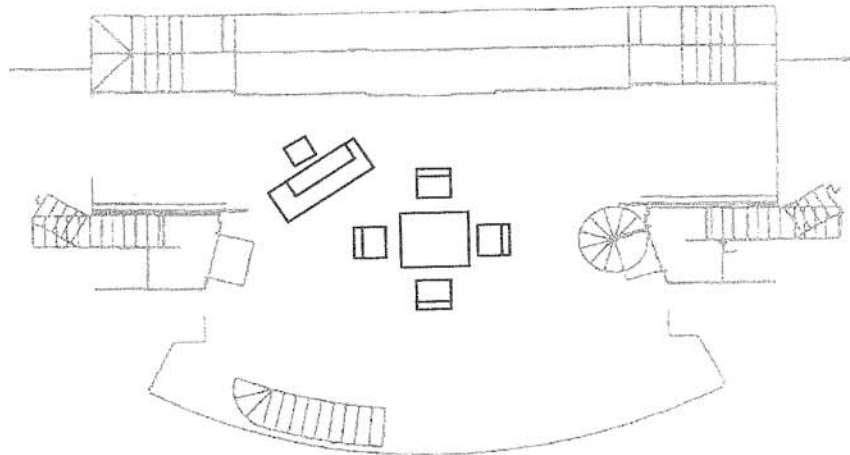


SHIFT# 7.5

PAGE: 20

CUE LINE: Mr. Bingley: "Indeed NOT."

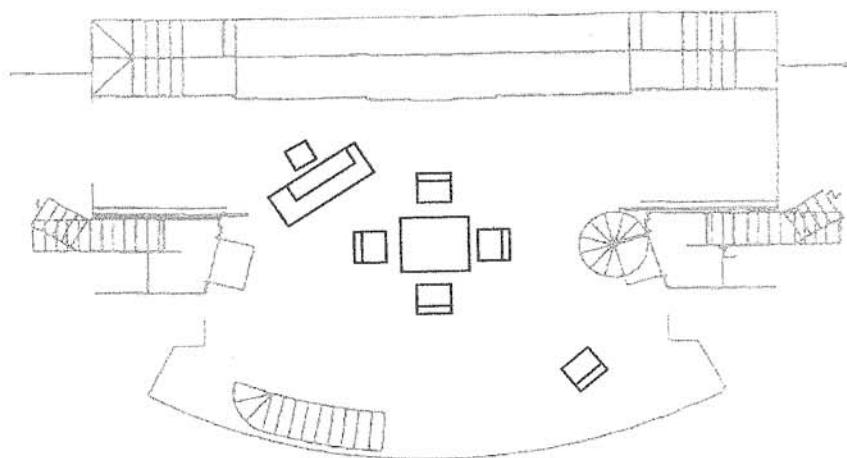
FROM: Netherfield Card Table with Piano



SHIFT:

DOUGLAS - ent. DR with X-chair, set chair DL on yellow spikes facing card table, exit DL

TO: Netherfield Card Table with Piano and Chair



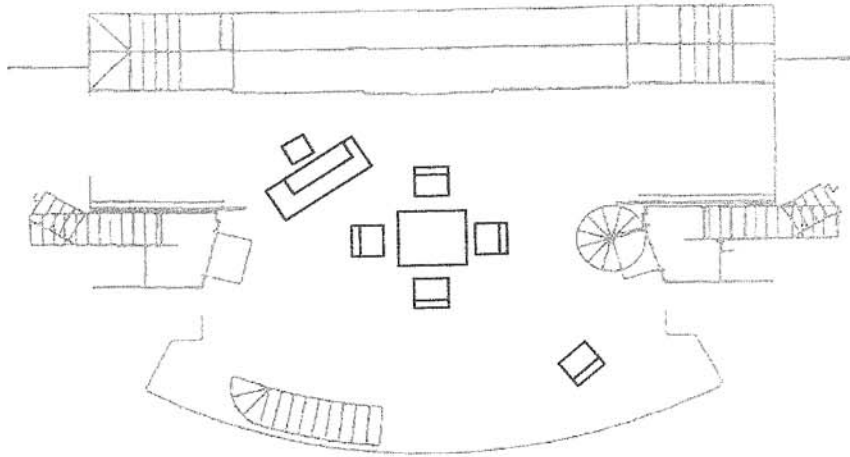


SHIFT# 8

PAGE: 22

CUE LINE: Darcy: "And yours is willfully to misunderstand THEM." (Q Lights)

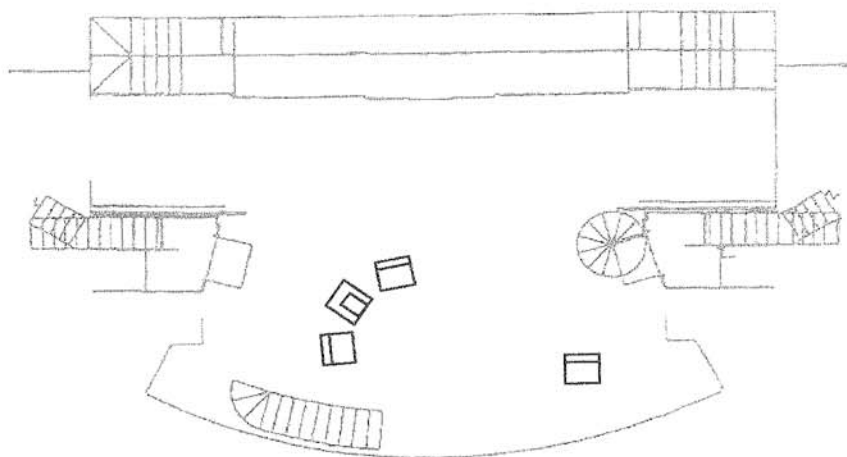
FROM: Netherfield Card Table with Piano and Chair



**SHIFT:**

- LIAM - start onstage, set stool on top of piano, strike piano UR
- AMY - start onstage cross to US X-chair, track chair to R of Bennet armchair, exit DR
- TONY - start onstage, strike L of table X-chair UL
- JULIA - start onstage, rotate DL X-chair to face DS, no exit
- JOE - ent. UL, strike card table (with cards and book) UL
- DOUGLAS - ent. DR, strike R of table X-chair UL
- ADELE - ent. DL, rotate DS X-chair to face DS (to L of armchair), no exit
- DAVID - ent. DR with Bennet armchair, set armchair facing DL, sit in chair

**TO: Bennet (Collins' Arrival)**

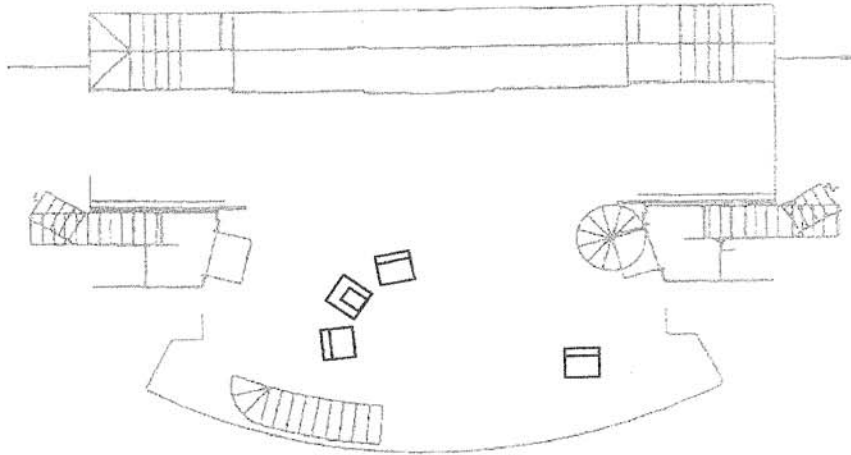


SHIFT# 9

PAGE: 24

CUE LINE: Mrs. Bennet: "DONE."

FROM: Bennet (Collins' Arrival)



SHIFT:

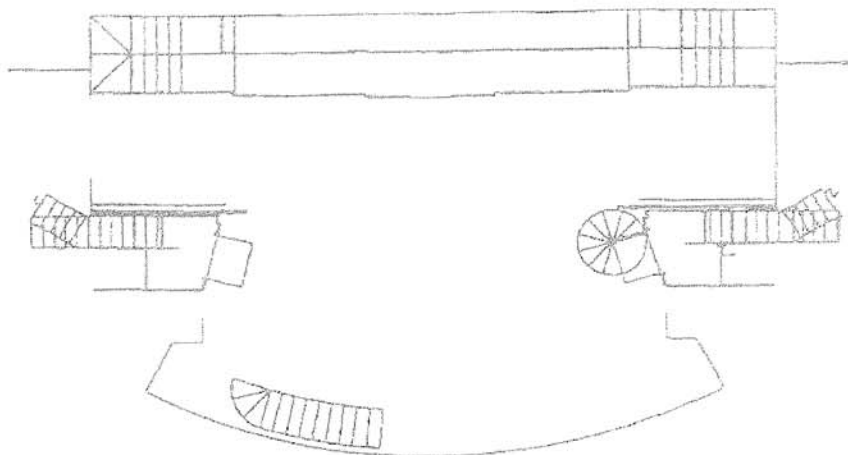
LIAM - ent. DR, strike Bennet armchair DR

PAT - ent. DR, strike R X-chair DR

AMY - ent. UR, strike L X-chair UL

SARAH - ent. DL, strike DL X-chair, exit 1C (SR)

TO: Stroll to Meryton (clear stage)

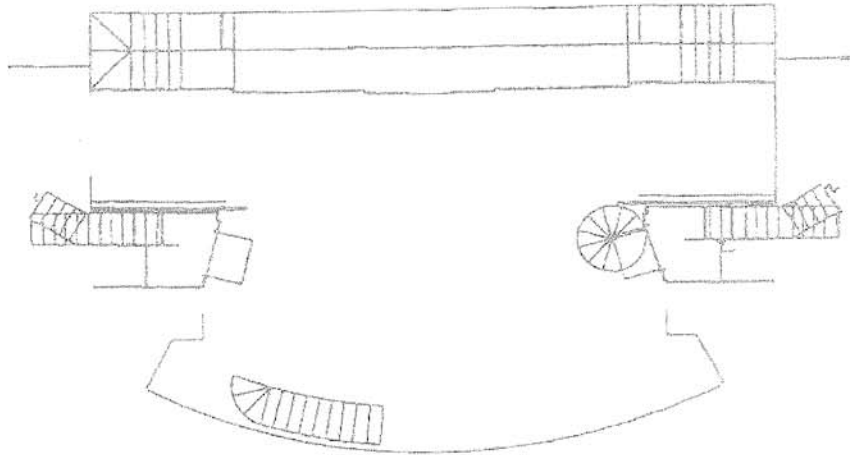


SHIFT# 10

PAGE: 27

CUE LINE: Elizabeth: "LYDIA."

FROM: Stroll to Meryton (clear stage)



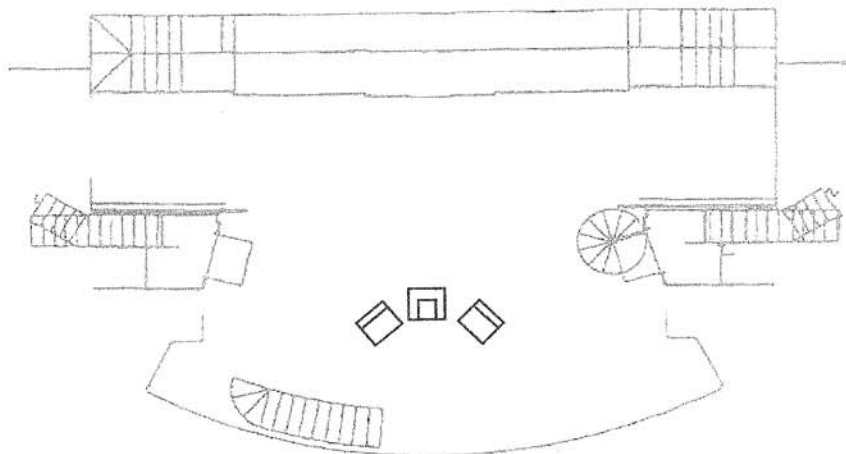
SHIFT:

KRISTA - ent. DR with Bennet armchair, set chair CS, facing DS, exit 1C (SL)

AMY - ent. DR with X-chair, set chair to R of armchair, exit DR

PEGGITY - ent. DL with X-chair, set chair to L of armchair, sit in chair

TO: Bennet 1 (Wickham Visit)

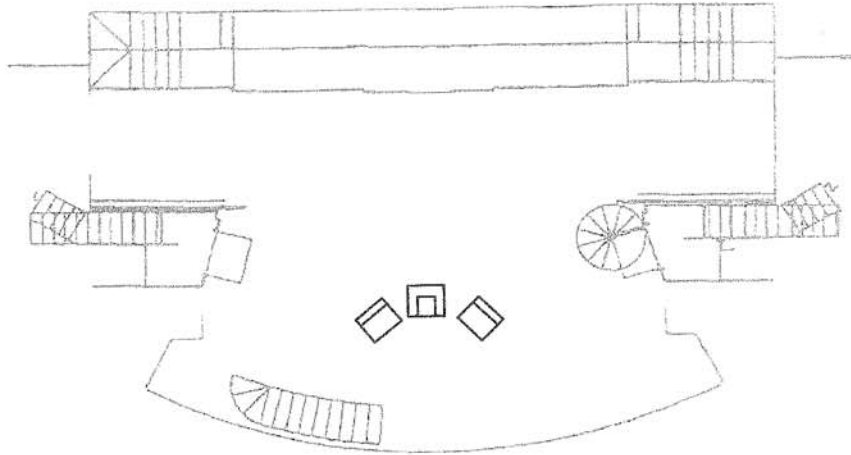


SHIFT# 11

PAGE: 28

CUE LINE: Mary: "As Mr. Collins once again held FORTH."

FROM: Bennet 1 (Wickham Visit)



SHIFT:

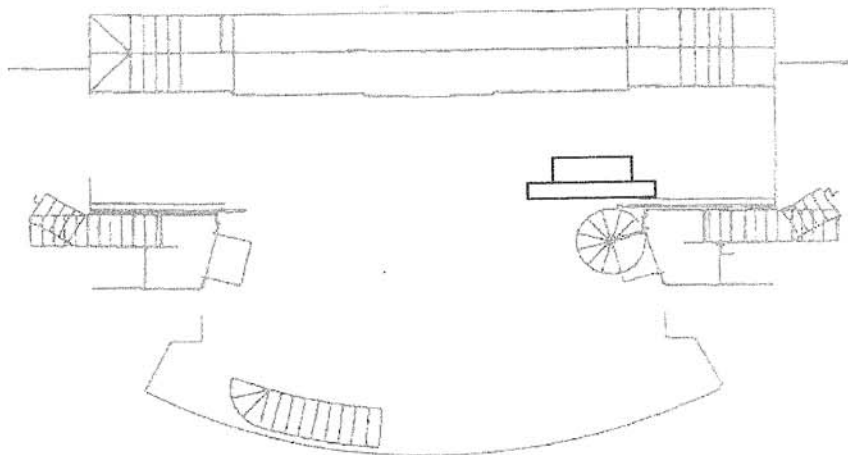
DAVID - start onstage, strike Bennet armchair UR

SARAH - ent. from pit, strike R X-chair DR

JENNIFER - start onstage, strike L X-chair DL

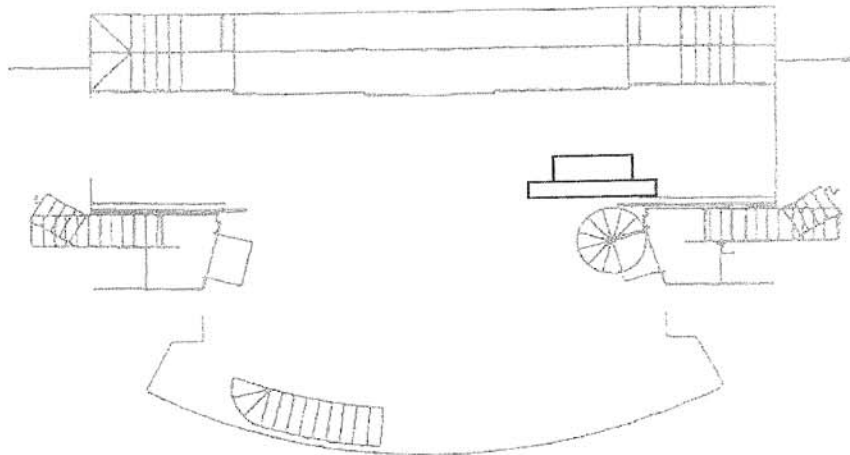
DOUGLAS - from UL (Q-light), push bush onstage

TO: Elizabeth and Wickham (single bush)



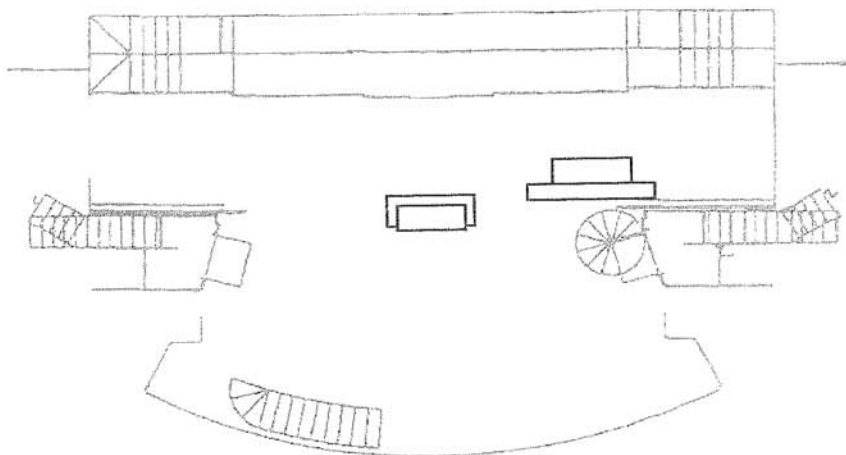
SHIFT# 12  
PAGE: 30  
CUE LINE: Q-Light

FROM: Elizabeth and Wickham (single bush)



SHIFT:  
ADELE - ent. UR with bench, set bench CS, exit UL (above the bush)

TO: Bush and Park Bench

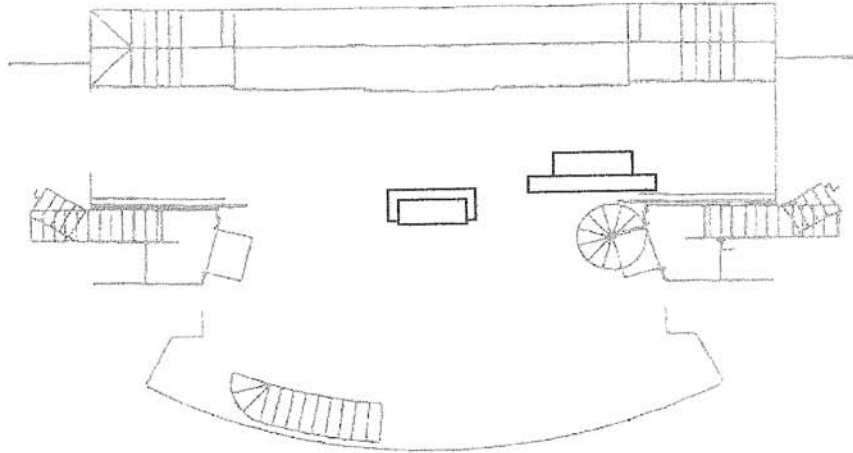


SHIFT# 13

PAGE: 31

CUE LINE: Elizabeth: "Well, whatever he said was well said, and whatever he did was done GRACEFULLY."

FROM: Bush and Park Bench

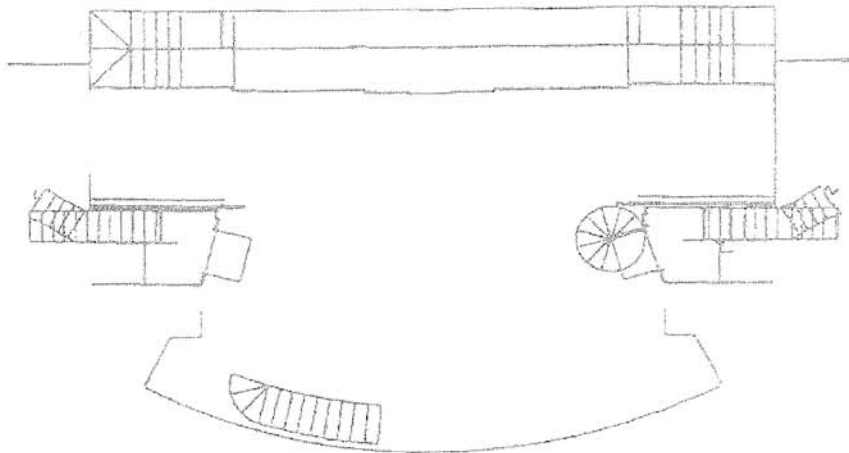


SHIFT:

ADELE - ent. UL (above bush), strike bench (with shawl) UR

DOUGLAS - from UL, strike bush from onstage

TO: Clear Stage

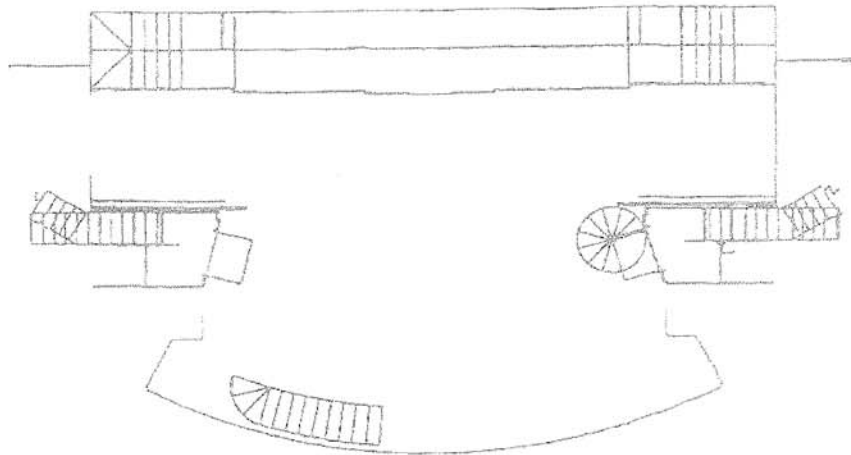


SHIFT# 14

PAGE: 32

CUE LINE: Top of Music (...mistress of Huntsford Parsonage.)

FROM: Clear Stage

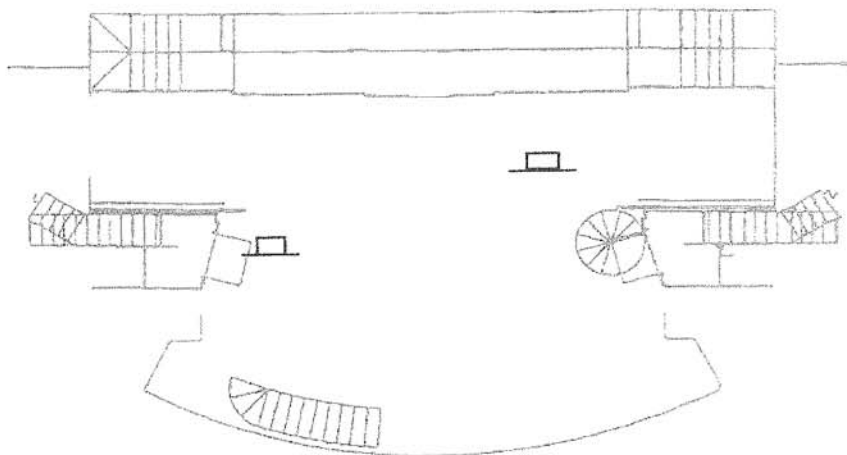


SHIFT:

LIAM - ent. UL with dancing push-toy, set push-toy UL, exit UL (below push-toy and after DOUGLAS)

DOUGLAS - ent. DR with dancing push-toy, set push-toy DR, exit UL (after KRISTA at end of line)

TO: Ball 3 (with dancing couple push-toys)

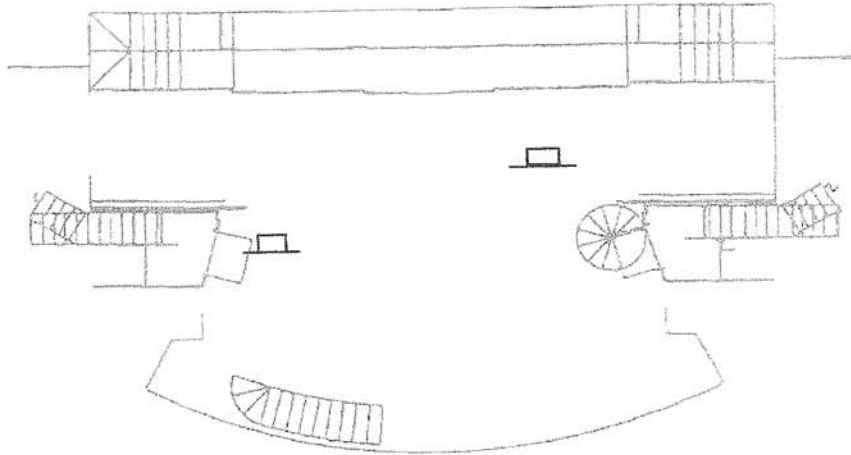


SHIFT# 15

PAGE: 36

CUE LINE: Jane: "Under your instruction, SIR." (After dance)

FROM: Ball 3 (with dancing couple push-toys)

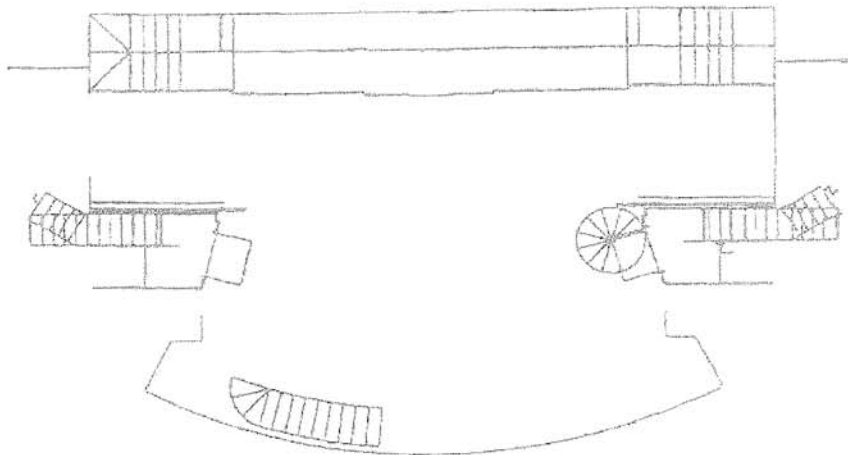


SHIFT:

LIAM - start onstage, strike DR dancing couple push-toy DR

PAT - start onstage, strike UL dancing couple push-toy UL

TO: Clear Stage



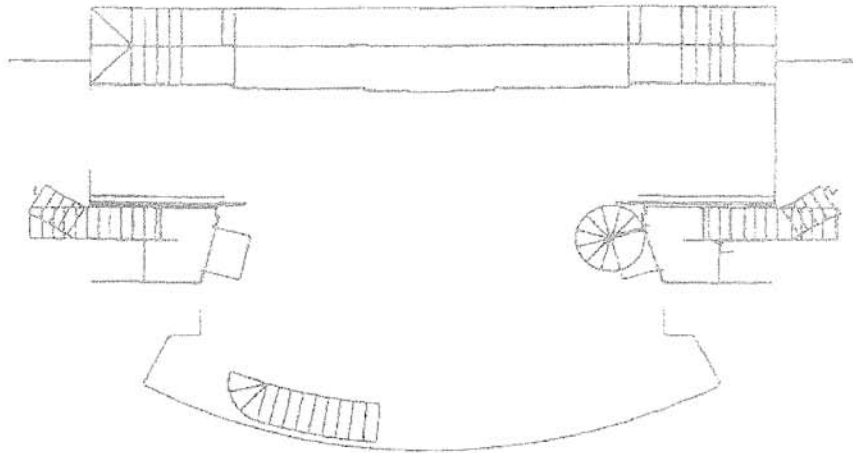


**SHIFT# 16**

**PAGE: 37**

**CUE LINE:** Lydia: "When at last the guests and officers quitted the HOUSE..."

**FROM: Clear Stage**



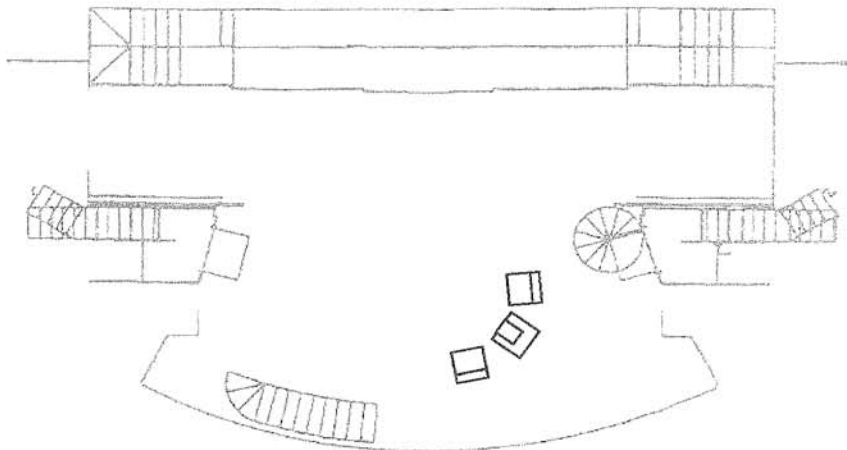
**SHIFT:**

ADELE - ent. DL with X-chair, set chair SR, DS of armchair, no exit

DAVID - ent. DL with X-chair, set chair US of armchair, exit DL

SARAH - ent. DL with Bennet armchair, set armchair CL, facing USR, exit DL

**TO: Bennet (Collins Proposal)**

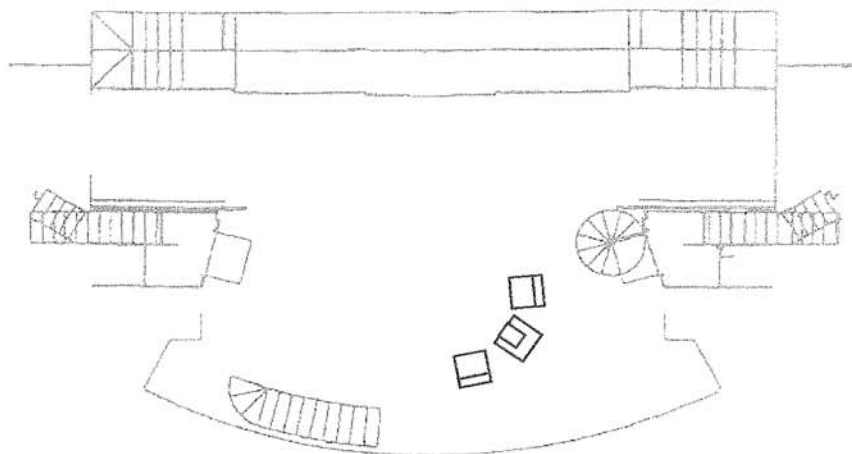


SHIFT# 17

PAGE: 41

CUE LINE: Mrs. Bennet: "I have no pleasure in talking to undutiful CHILDREN."

FROM: Bennet (Collins Proposal)

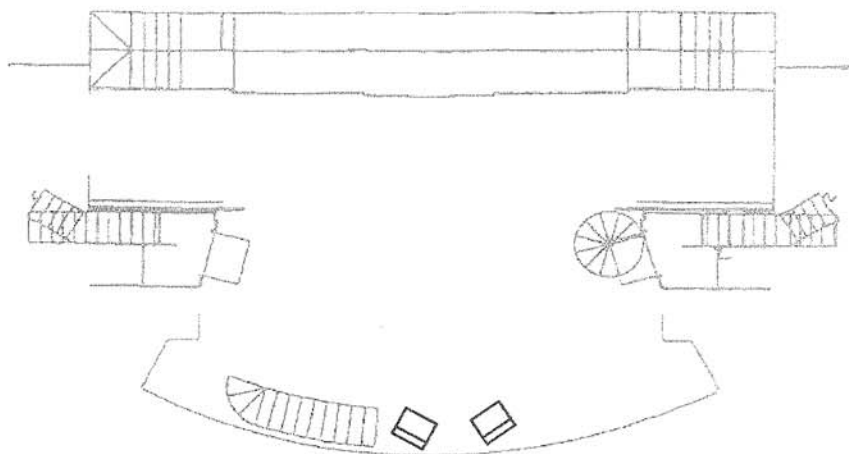


SHIFT:

JOE - ent. DL, track DS X-chair from SL to DCL, facing UR, strike Bennet armchair DL

DOUGLAS - ent. DL, track US X-chair DCR, facing UL, exit DR (above ADELE and JENNIFER)

TO: Bingley Departure (X-chairs down center facing upstage)

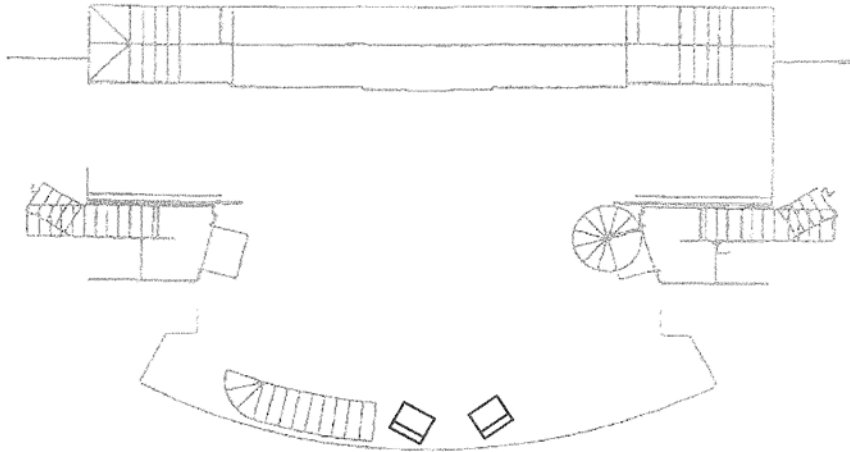


**SHIFT# 18**

**PAGE: 44**

**CUE LINE: Mr. Bennet: "...I may be the SURVIVOR."**

**FROM: Bingley Departure (X-chairs down center, facing upstage)**



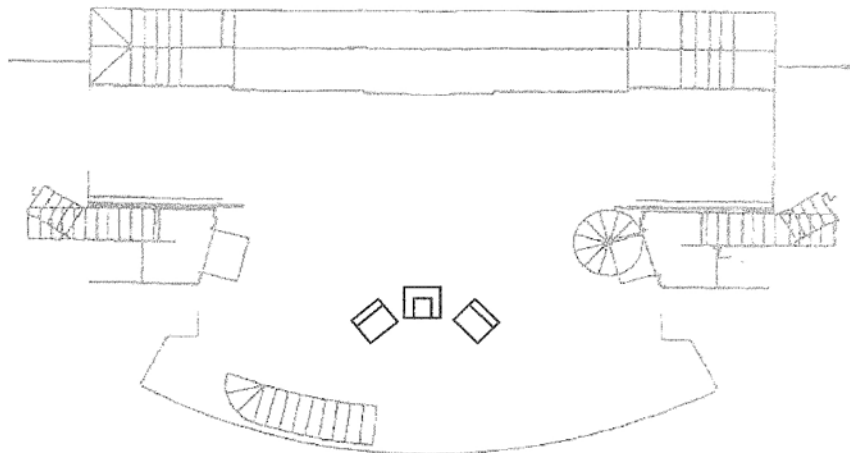
**SHIFT:**

**JENNIFER - ent. DL, rotate L X-chair to face DR, no exit**

**ADELE - ent. DL with Bennet armchair, set armchair facing DS, no exit**

**JULIA - start onstage, rotate R X-chair to face DL, no exit**

**TO: Gardiners Intro (Bennet down center, facing downstage)**

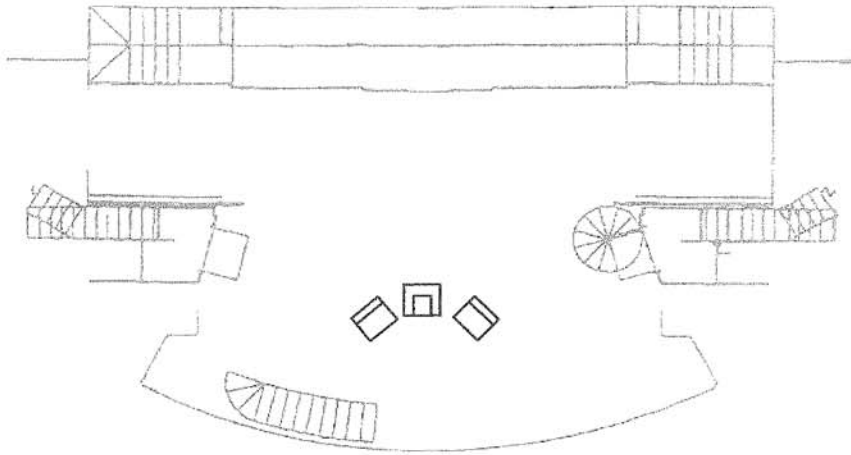


**SHIFT# 19**

**PAGE: 46**

**CUE LINE:** Elizabeth: "...spending a night in London made the plan perfect as plan could BE."

**FROM:** Gardiners Intro (Bennet down center, facing downstage)



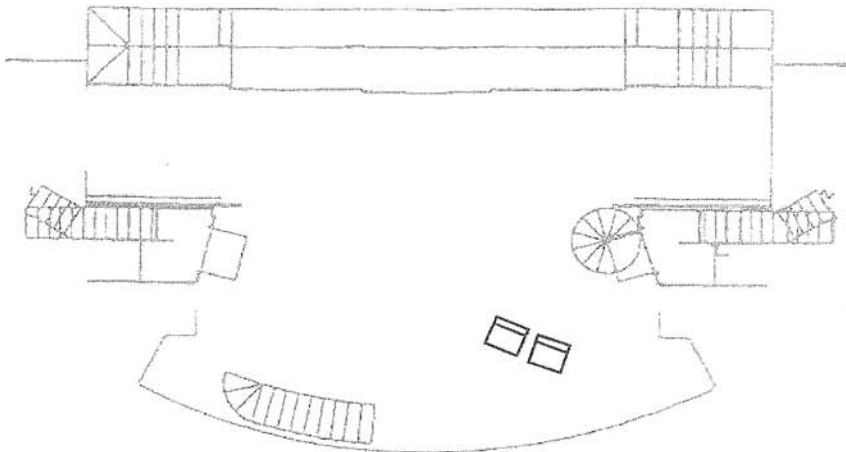
**SHIFT:**

AMY - start onstage, track L X-chair from DC to far SL, facing DC, no exit

JOE - ent. DR, strike Bennet armchair, exit DR

JENNIFER - ent. DR, track R X-chair from DC to SL (SR of AMY's chair), facing DC, exit DL

**TO:** Jane in London

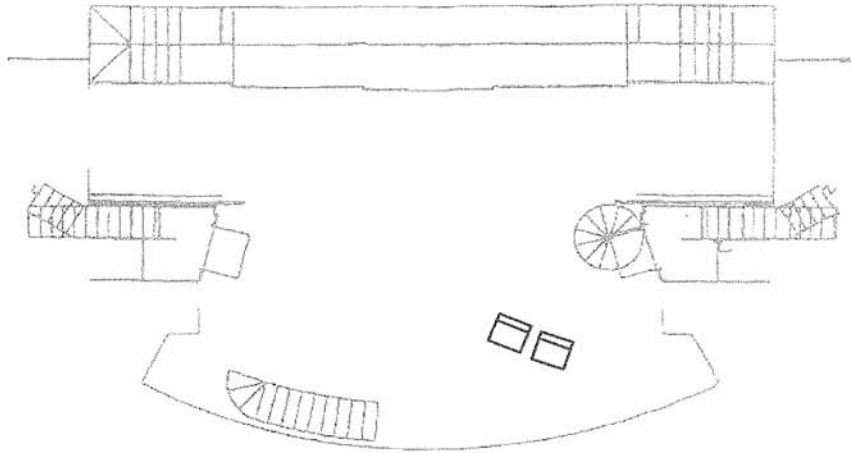


**SHIFT# 20**

**PAGE: 47**

**CUE LINE: Elizabeth: "what are men to rocks and MOUNTAINS!"**

**FROM: Jane in London (2 X-chairs side by side down left)**

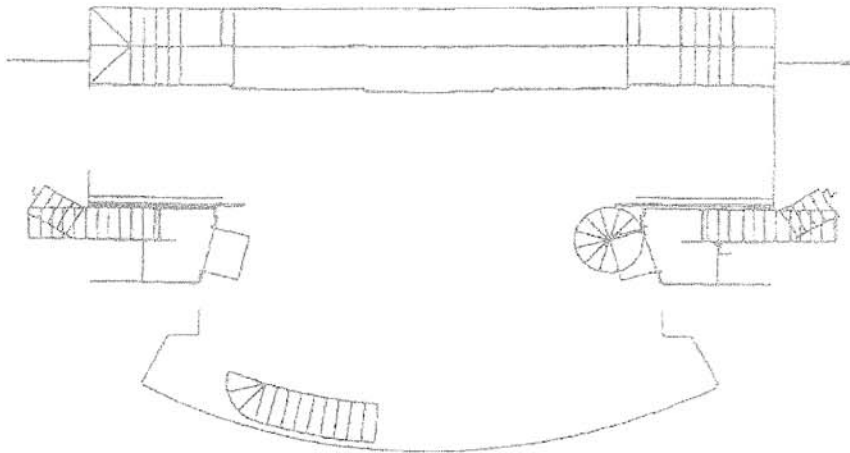


**SHIFT:**

**AMY - start onstage (descend spiral stairs), strike R X-chair DL**

**KRISTA - start onstage, strike L X-chair stage DL**

**TO: (Clear Stage)**

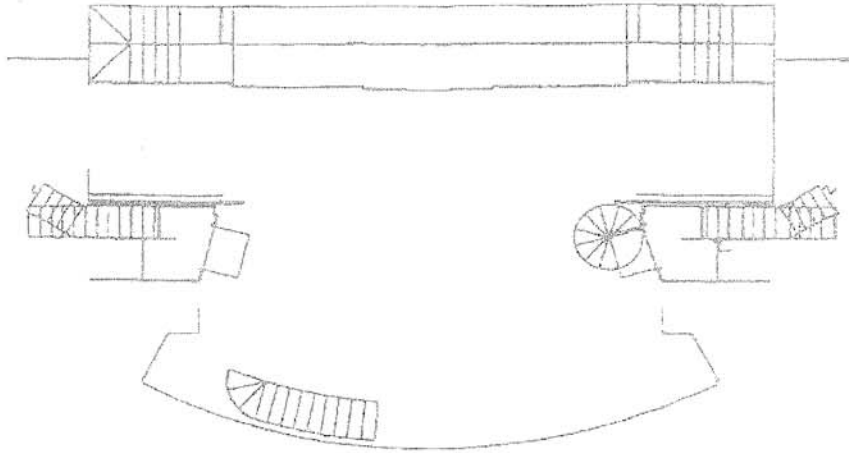


**SHIFT# 21**

**PAGE: 47**

**CUE LINE:** Charlotte: "Dearest Eliza, you are welcome and then welcome AGAIN."

**FROM: (Clear Stage)**

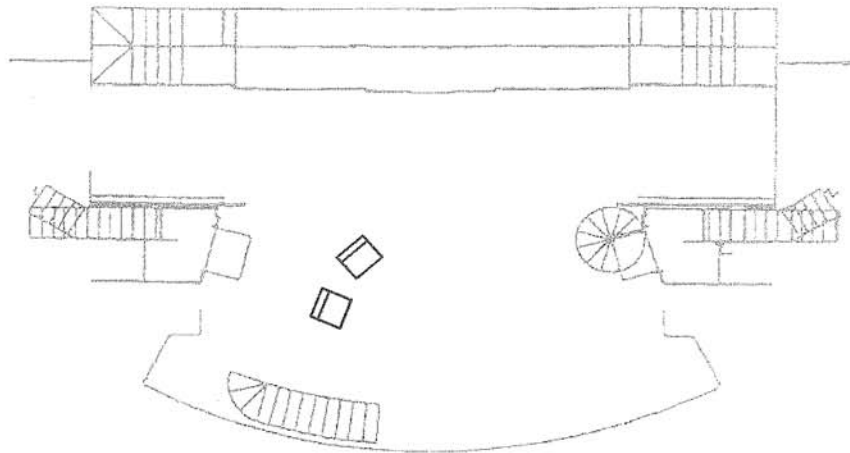


**SHIFT:**

**JOE - ent. DR with spindle chair, set chair DCR facing DL, exit DR**

**JENNIFER - ent. UR with spindle chair, set chair CR (above JOE), facing DL, exit UR**

**TO: Pre-Lady Catherine**

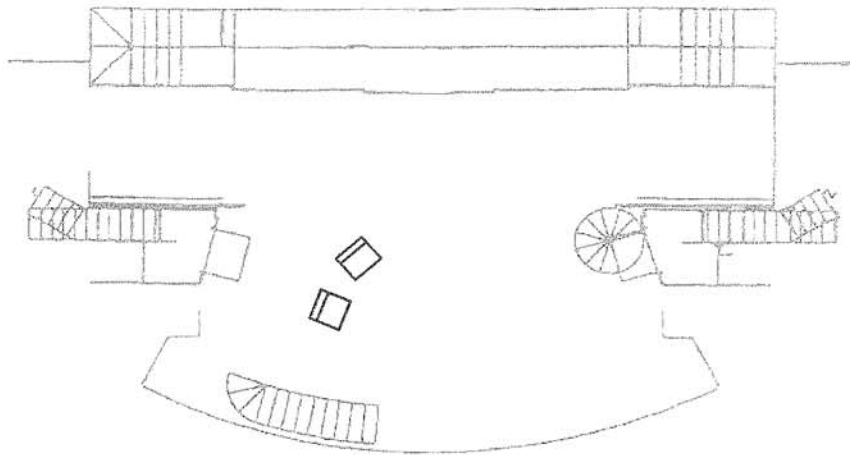


**SHIFT# 22**

**PAGE: 47**

**CUE LINE:** Collins: "Lady Catherine will not think the worse of you for being simply DRESSED."

**FROM: Pre-Lady Catherine**



**SHIFT:**

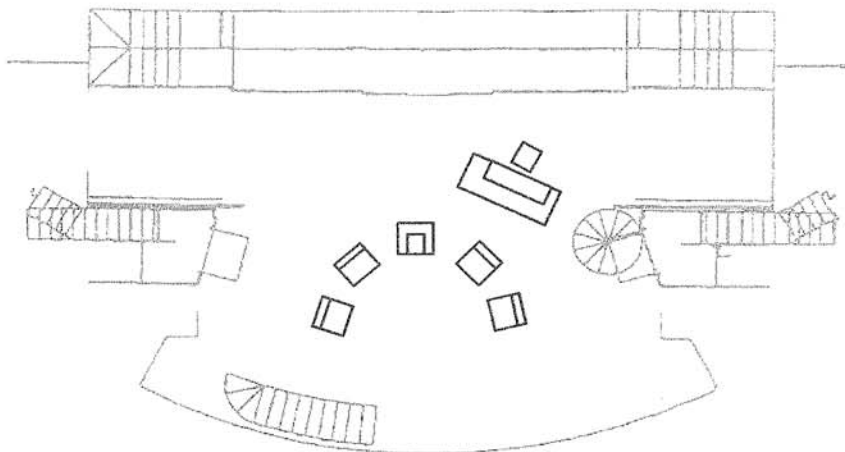
LIAM - ent. DR with Lady C. armchair, set armchair CS, facing DS, no exit

KRISTA - ent. DL with spindle chair, set chair DCL, facing R, exit DL

AMY - ent. DL with spindle chair, set chair CL (above KRISTA), facing DR, exit DL

DAVID - ent. UL with piano and stool, set piano on spike, set stool, exit UL

**TO: Lady Catherine**

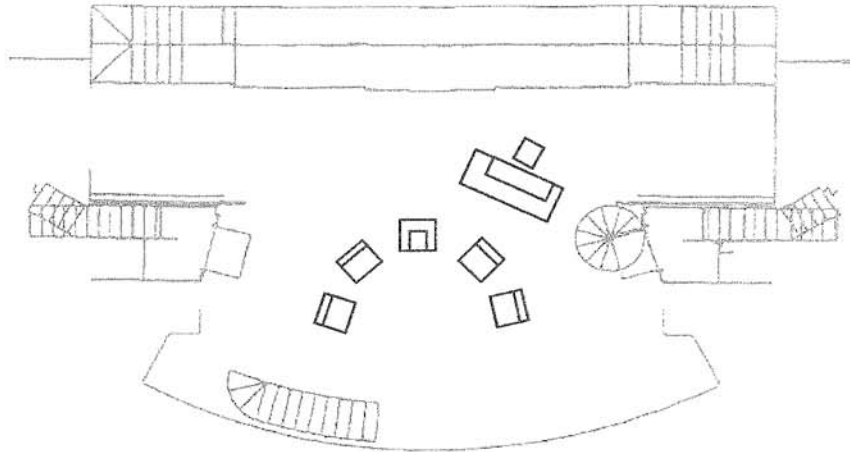


**SHIFT# 23**

**PAGE: 52**

**CUE LINE:** Elizabeth: "...after our...delightful evening...at Lady Catherine de Bourgh's..."

**FROM:** Lady Catherine



**SHIFT:**

REMI - start onstage, strike Lady C. armchair DR

DAVID - ent. UL, set stool on top of piano, strike piano UL

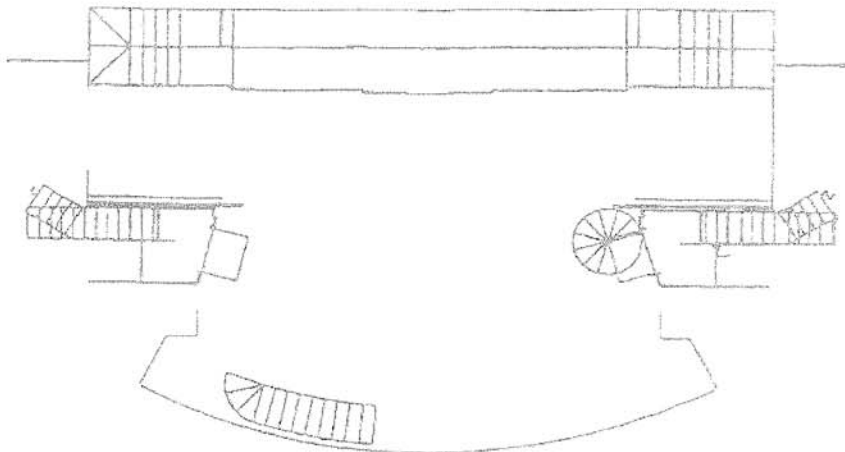
JENNIFER - ent. DR, strike UR spindle chair UR

PEGGITY - ent. DR, strike DR spindle chair DL (below KRISTA)

ADELE - ent. DL, strike UL spindle chair DL

KRISTA - ent. DL, strike DL spindle chair DR

**TO: Clear Stage (Elizabeth and Fitzwilliam)**



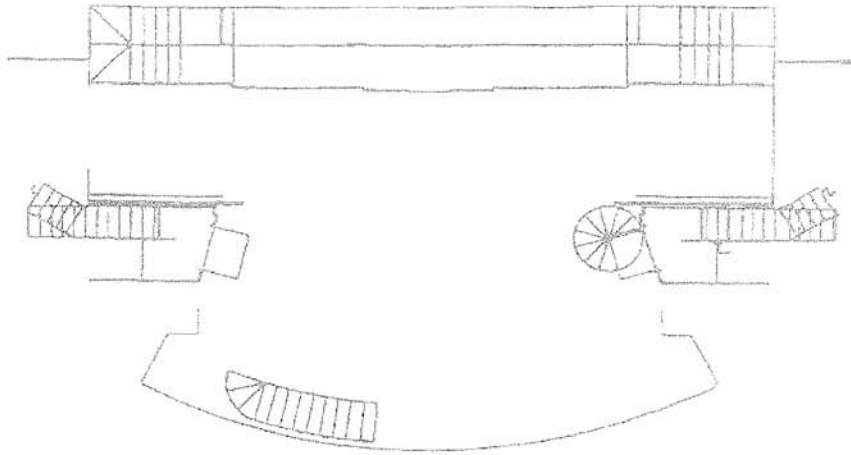


SHIFT# 24

PAGE: 54

CUE LINE: Elizabeth: "...in his friend's connections than from their want of **SENSE**." (when 1-C opens)

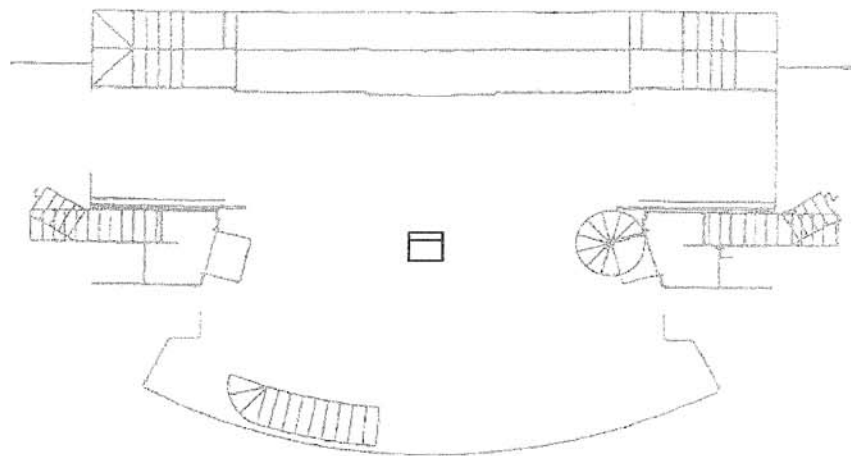
FROM: Clear Stage (Elizabeth and Fitzwilliam)



SHIFT:

DOUGLAS - ent. 1-C with spindle chair, set CS, exit 1-C

TO: Darcy Proposal

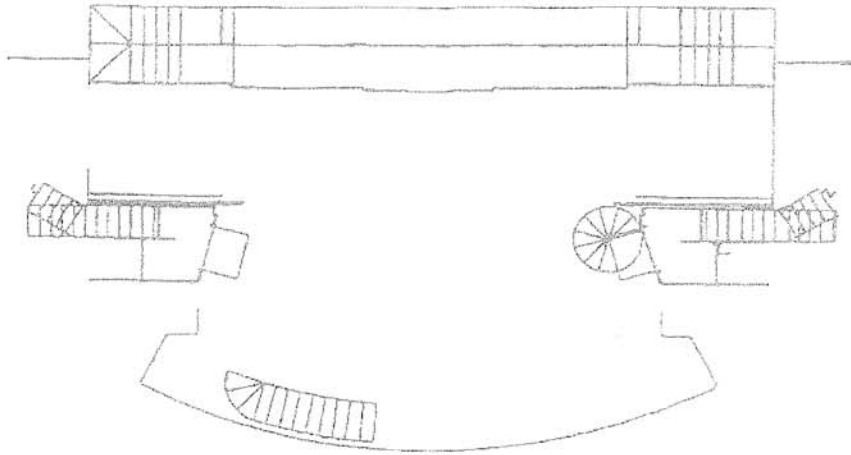


**SHIFT# 25**

**PAGE: 60**

**CUE LINE: Elizabeth: "Til this moment I never knew MYSELF."**

**FROM: Clear Stage**



**SHIFT:**

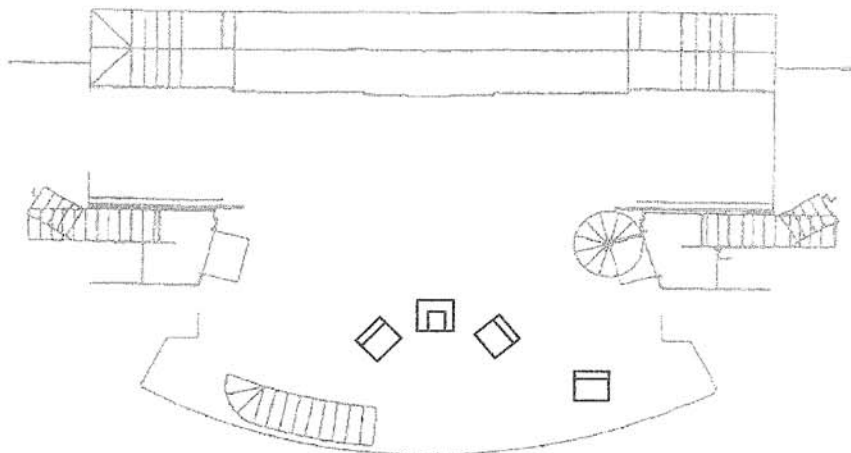
REMI - ent. DR with Bennet armchair, set CS facing DS, exit DR

DOUGLAS - ent. DR with X-chair, set chair to R of armchair, exit DR

JOE - ent. DL with X-chair, set chair to L of armchair, exit DL

AMY - ent. DL with X-chair, set chair DL, facing DS, exit DL

**TO: Bennet 1 (Elizabeth Returns Home)**

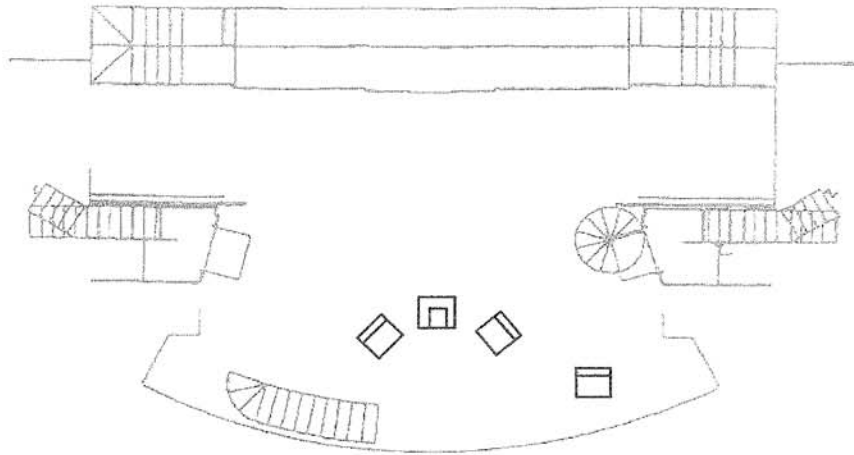


**SHIFT# 26**

**PAGE: 66**

**CUE LINE:** Elizabeth: "The DEPARTURE of the regiment including many acquaintances..."

**FROM: Bennet 1 (Elizabeth Returns Home)**



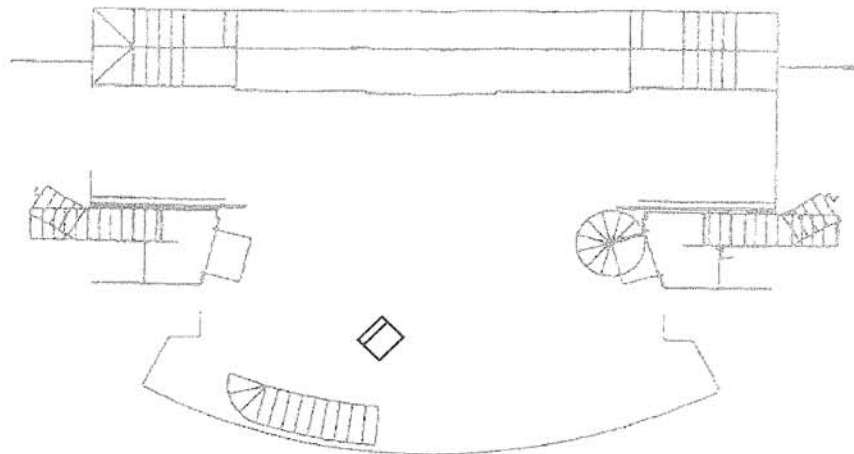
**SHIFT:**

REMI - ent. DR, strike Bennet armchair DR

AMY - ent. DL, strike CL X-chair DL

PAT - ent. DL, strike DL X-chair UR

**TO: Single X-Chair Center Right (Bennet Tableau)**

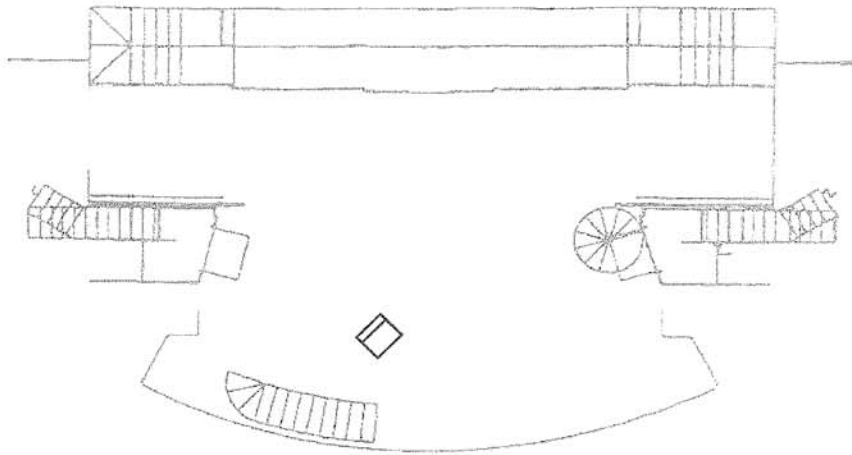


SHIFT# 27

PAGE: 66

CUE LINE: Mrs. Gardiner: "...due to Mr. Gardiner's business must be somewhat **CURTAILED** in extent.

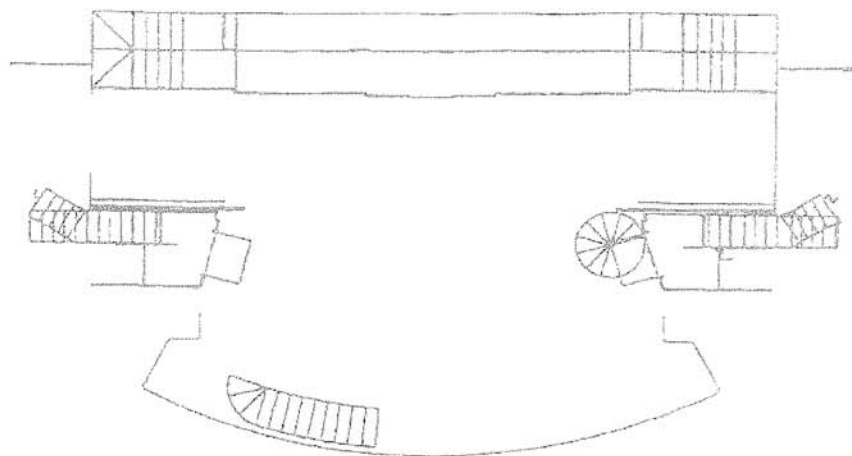
FROM: Single X-Chair Center Right (Bennet Tableau)



SHIFT:

DAVID - start onstage, strike X-chair UR (take 2 steps backward, then turn clockwise before exiting)

TO: Clear Stage

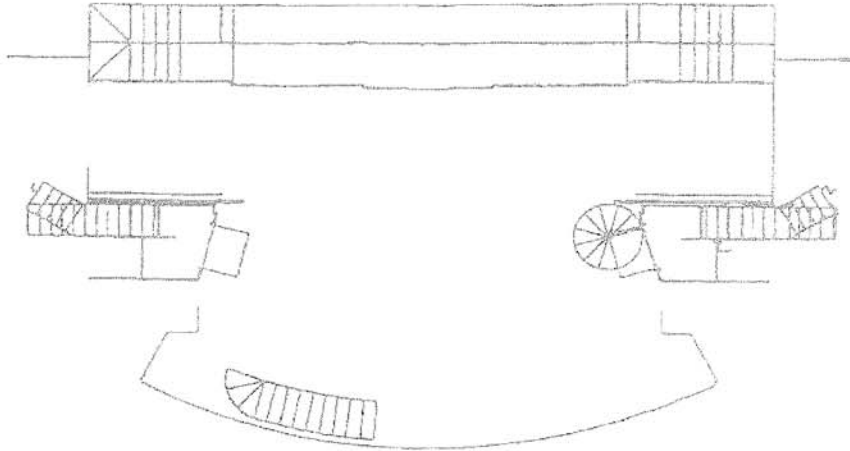


SHIFT# 28

PAGE: 67

CUE LINE: Mrs. Gardiner: "...for they summer always in London. ELIZABETH?"

FROM: Clear Stage



**SHIFT:**

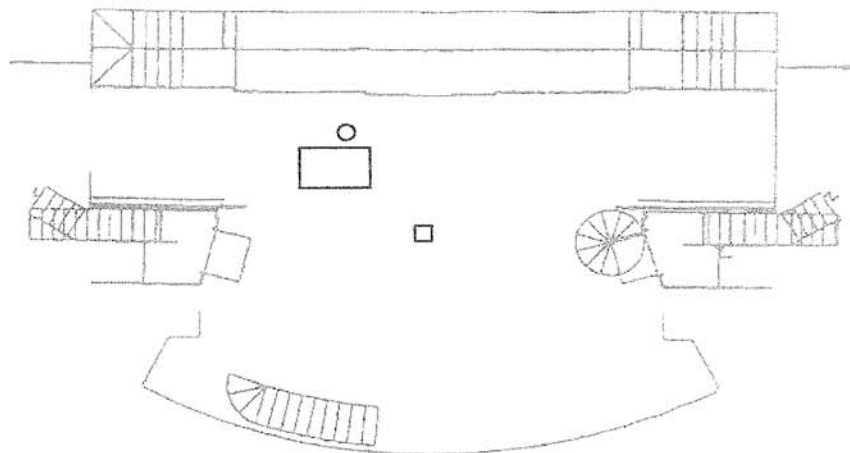
ADELE - ent. DR with carriage pull-toy, cross from SR to SL, exit DL with pull-toy

REMI - ent. DL with small carriage stool, set stool CS, sit

PAT - ent. UL with Pemberley house pull-toy, set pull-toy UR, no exit (CUE LINE: Elizabeth: "The HOUSE sits well on rising ground.")

LIAM - ent. DR, strike small carriage stool DR (CUE LINE: Housekeeper: " The master is, of course ABSENT but we expect him tomorrow..." (claps hands))

**TO: Journey to Pemberley and Arrival**

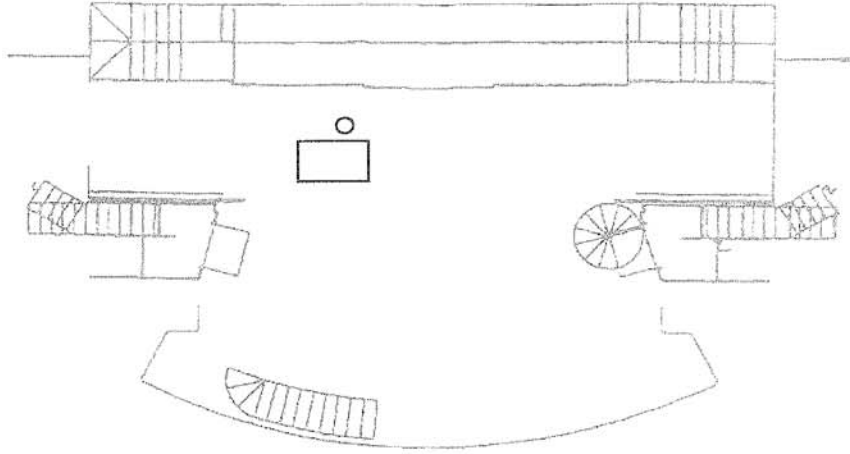


**SHIFT# 29**

**PAGE: 71**

**CUE LINE: Mrs. Gardiner: "Greatest PLEASURE."**

**FROM: Journey to Pemberley and Arrival**



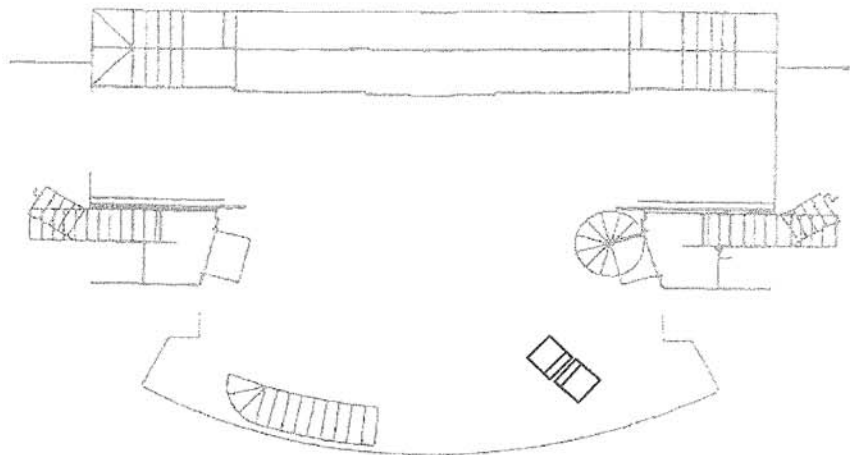
**SHIFT:**

**PAT - start onstage, strike Pemberley house pull-toy with stool UR**

**LIAM - ent. DL with spindle chair and lap desk, set chair DL facing DL, pick up lap table, stand to L of chair, handoff lap table to JULIA after she crosses to SL, take her shawl, exit DL (CUE LINE: Mrs. Gardiner: "...but his features are perfectly GOOD.")**

**DOUGLAS - ent. UL with spindle chair and lap desk, set chair DL facing UC, pick up lap table (grab pencil), stand to L of chair, handoff lap table and pencil to AMY after she crosses to SL, exit DL (CUE LINE: Mrs. Gardiner: "...but his features are perfectly GOOD.")**

**TO: Pemberley Interior**

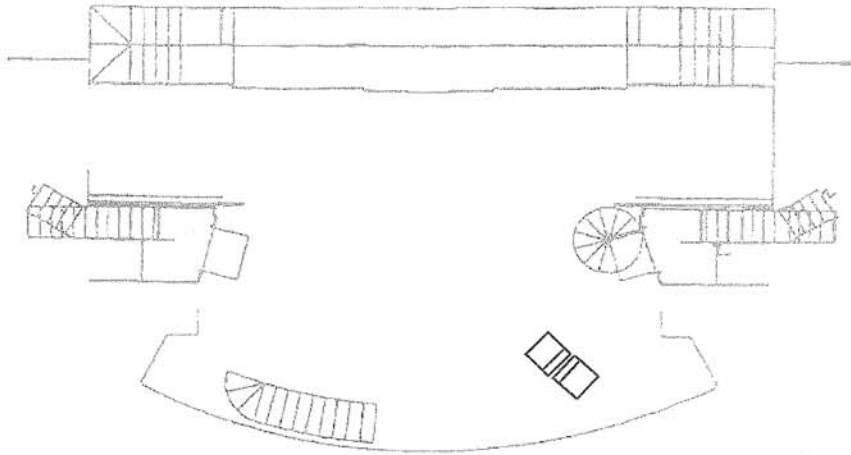


**SHIFT# 30**

**PAGE: 72**

**CUE LINE: Housekeeper: "Thought you might be wanting IT."**

**FROM: Pemberley Interior**

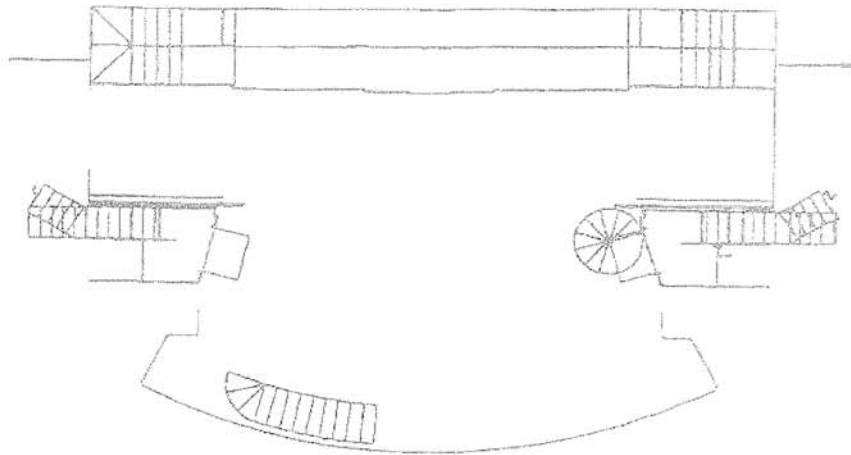


**SHIFT:**

**LIAM - ent. DL, strike DS spindle chair with lap table and shawl DL**

**DOUGLAS - ent. DL, strike US spindle chair DL**

**TO: Clear Stage**

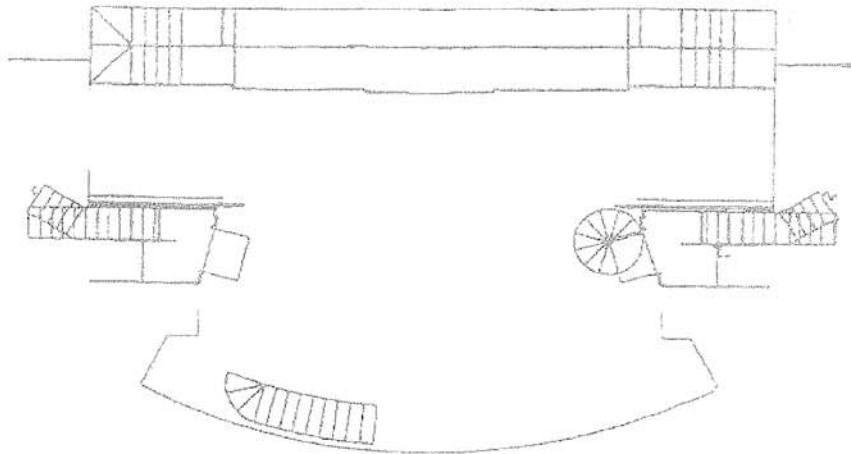


SHIFT# 31

PAGE: 73

CUE LINE: Mrs. Bennet: "...to be assured it has taken place at ALL, for we now hear..."

FROM: Clear Stage

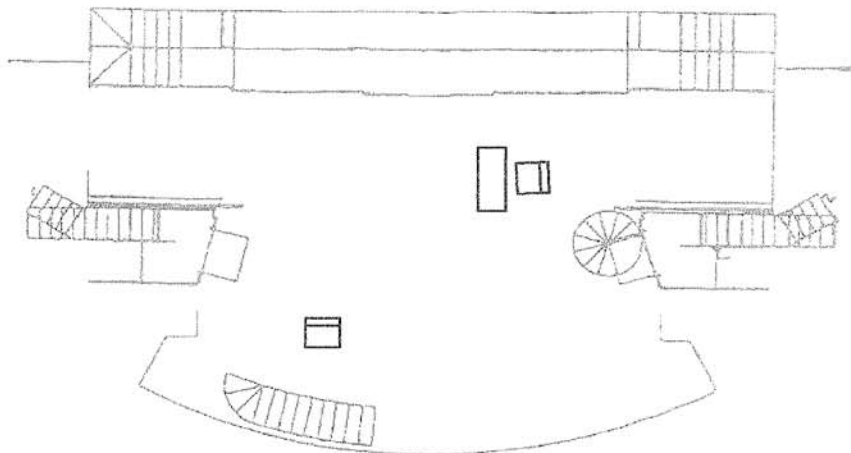


SHIFT:

LIAM - ent. UL with spindle chair, set chair (facing DS) US and in the middle of pit stairs, exit DR

DOUGLAS - ent. UL with spindle chair, set chair CL, facing SR, exit UL, ent. UL with writing table, set table to R of spindle chair with drawer on SL side (after TONY has been seated), exit UL

TO: Darcy Study



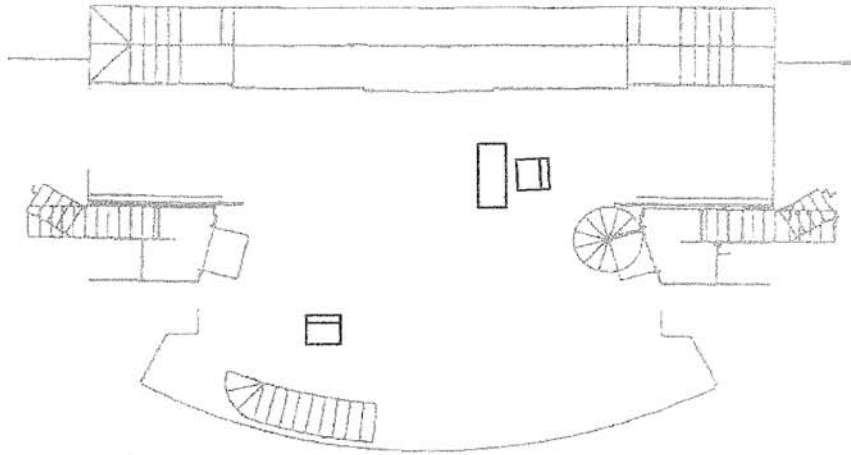


SHIFT# 32

PAGE: 75

CUE LINE: Miss Bingley: "OH."

FROM: Darcy Study



**SHIFT:**

LIAM - ent. DR, strike DR spindle chair (with letter) DR

PAT - ent. DL, strike CL spindle chair UL

DOUGLAS - ent. UL, strike writing table UL

REMI - ent. DL with Bennet armchair, set chair CL facing DR, no exit

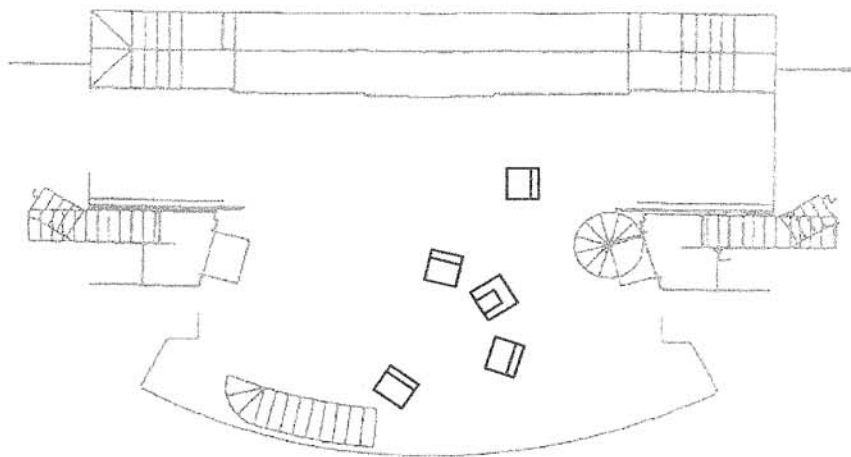
KRISTA - ent. UL with X-chair, set chair USR of armchair facing DC, no exit

PEGGITY - ent. DL with X-chair, set chair DSL of armchair, no exit

ADELE - ent. DR with X-chair, set chair DC facing DR, no exit

SARAH - ent. UR with X-chair, set chair UL, no exit

**TO: Bennet (Search for Lydia)**

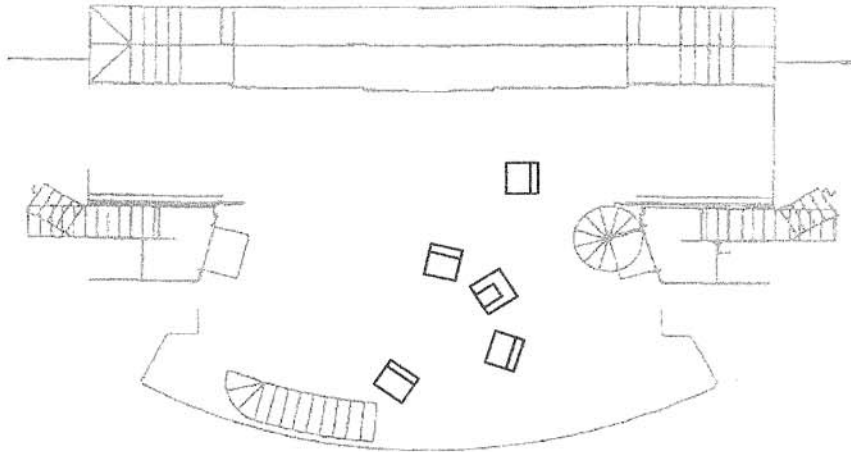


**SHIFT# 33**

**PAGE: 79**

**CUE LINE:** Kitty: "Mr. Gardiner WROTE that Mr. Wickham had resolved..."

**FROM: Bennet (Search for Lydia)**



**SHIFT:**

**DAVID** - start onstage, rotate Bennet armchair to face SL, no exit

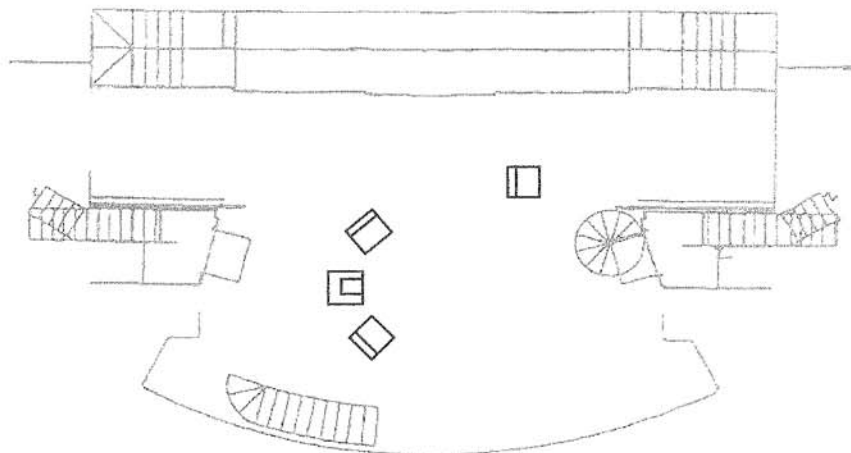
**KRISTA** - start onstage, rotate X-chair US of armchair to face DL, strike DL chair DL, re-enter DL

**JULIA** - start onstage, track DC X-chair to DS of armchair, no exit

**SARAH** - start onstage, handoff glass to DOUGLAS UL, rotate UL X-chair to face SL, no exit

**DOUGLAS** - ent. UL, receive water glass from SARAH, exit UL

**TO: Bennet (Lydia Returns Home)**

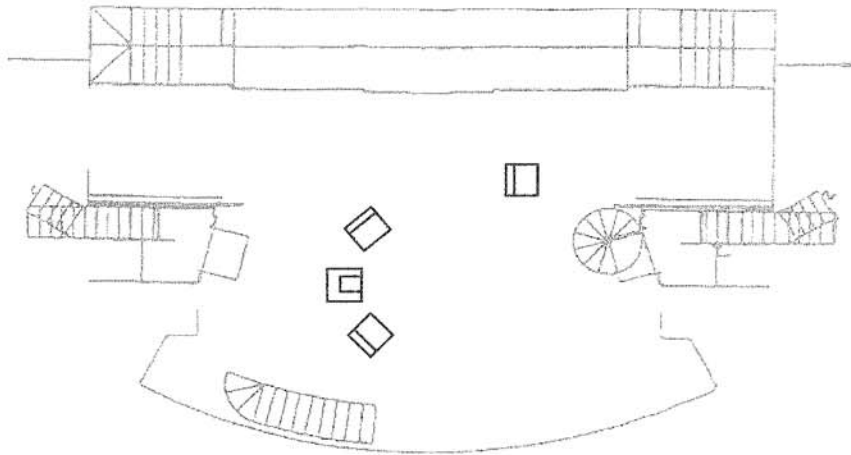


**SHIFT# 34**

**PAGE: 80**

**CUE LINE: Lydia: "Coming MAMMA."**

**FROM: Bennet (Lydia Returns Home)**



**SHIFT:**

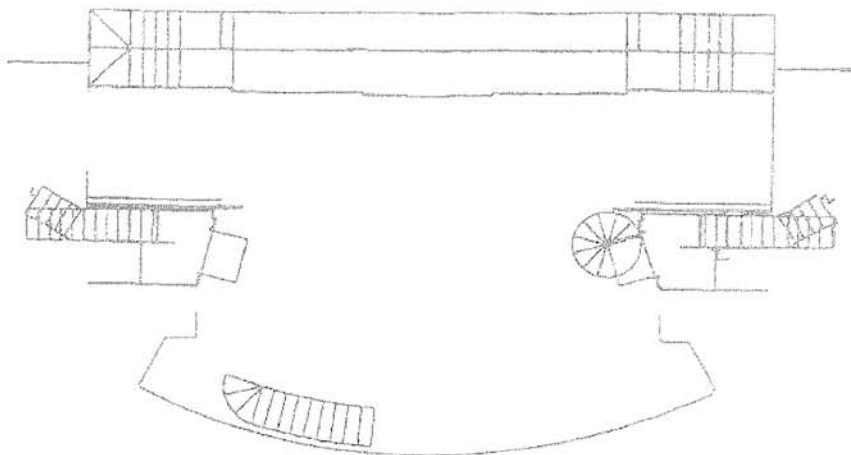
REMI - ent. DR, strike Bennet armchair DL

ADELE - ent. DR, strike US X-chair UR

SARAH - ent. DL, strike DS X-chair DR

DOUGLAS - ent. UL, strike UL X-chair UL

**TO: Clear Stage**

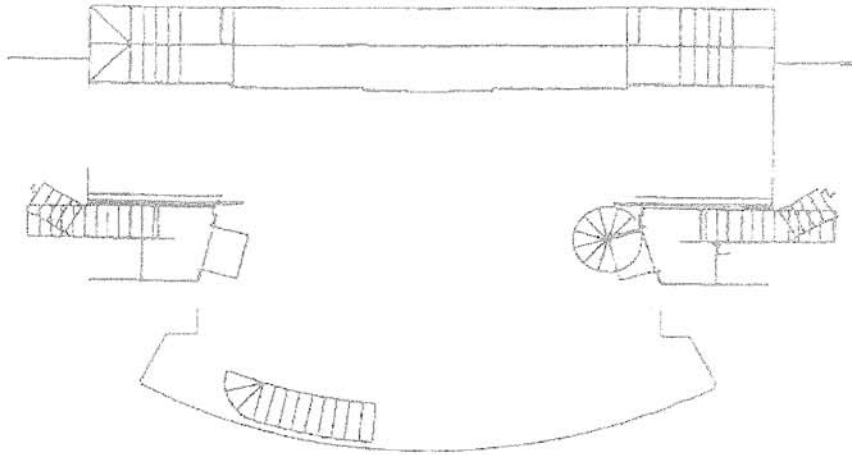


SHIFT# 35

PAGE: 83

CUE LINE: Mrs. Bennet: "I mean...he is NOTHING to us and I am sure..."

FROM: Clear Stage



SHIFT:

DOUGLAS - ent. DL with Bennet armchair, set CS, facing DS, exit 1-C

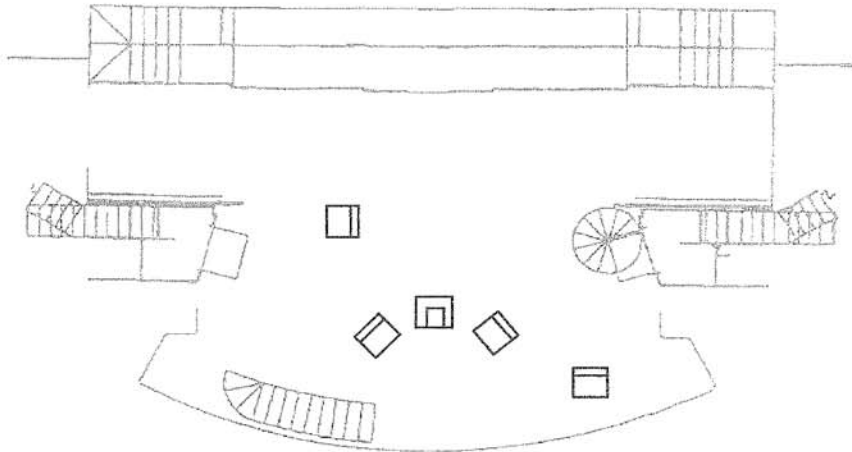
JENNIFER - ent. DL with X-chair, set chair to L of armchair, exit DL

JOE - ent. DL with X-chair, set chair to R of armchair, exit DR

SARAH - ent. DL with X-chair, set chair DL, no exit

AMY - ent. DR with X-chair, set chair UR, exit DR

TO: Bennet 1 (Bingley Returns)

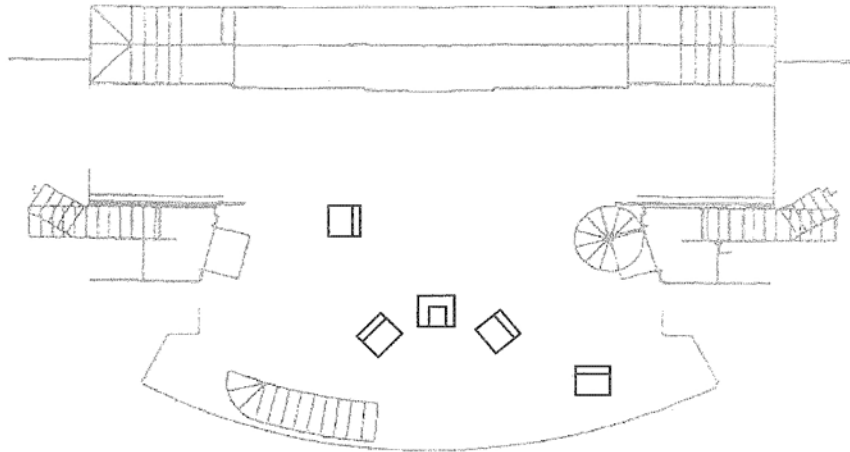


SHIFT# 36

PAGE: 90

CUE LINE: Lady Catherine: "...if you will favour me with your COMPANY."

FROM: Bennet 1 (Bingley Returns)



**SHIFT:**

DAVID - start onstage, strike Bennet armchair UR (above bush)

KRISTA - start onstage, strike UR X-chair UL (below bush)

PEGGITY - start onstage, strike CR X-chair DR

SARAH - start onstage, strike CL X-chair UL (below bush)

ADELE - start onstage, strike DL X-chair DL

JOE - from pit, set pit bush on spike on steps

REMI - from UL, push bush onstage to black spike

DOUGLAS - from UR, push bush onstage to black spike

**TO: Clear Stage with Bushes**

